

GOLD

10' WIDE ELECTRICAL EASEMENT  
BOOK 6750, PAGE 363

15A

STORE MASTER FUNDING XIII, LLC  
BOOK 21905, PAGE 571  
PLAN BOOK 250, PAGE 63  
PLAN BOOK 314, PAGE 106  
PLAN BOOK 332, PAGE 68  
SEE ALSO PLAN BOOK 332, PAGE 69

MERIDIAN OF  
PLAN BOOK 314, PAGE 106

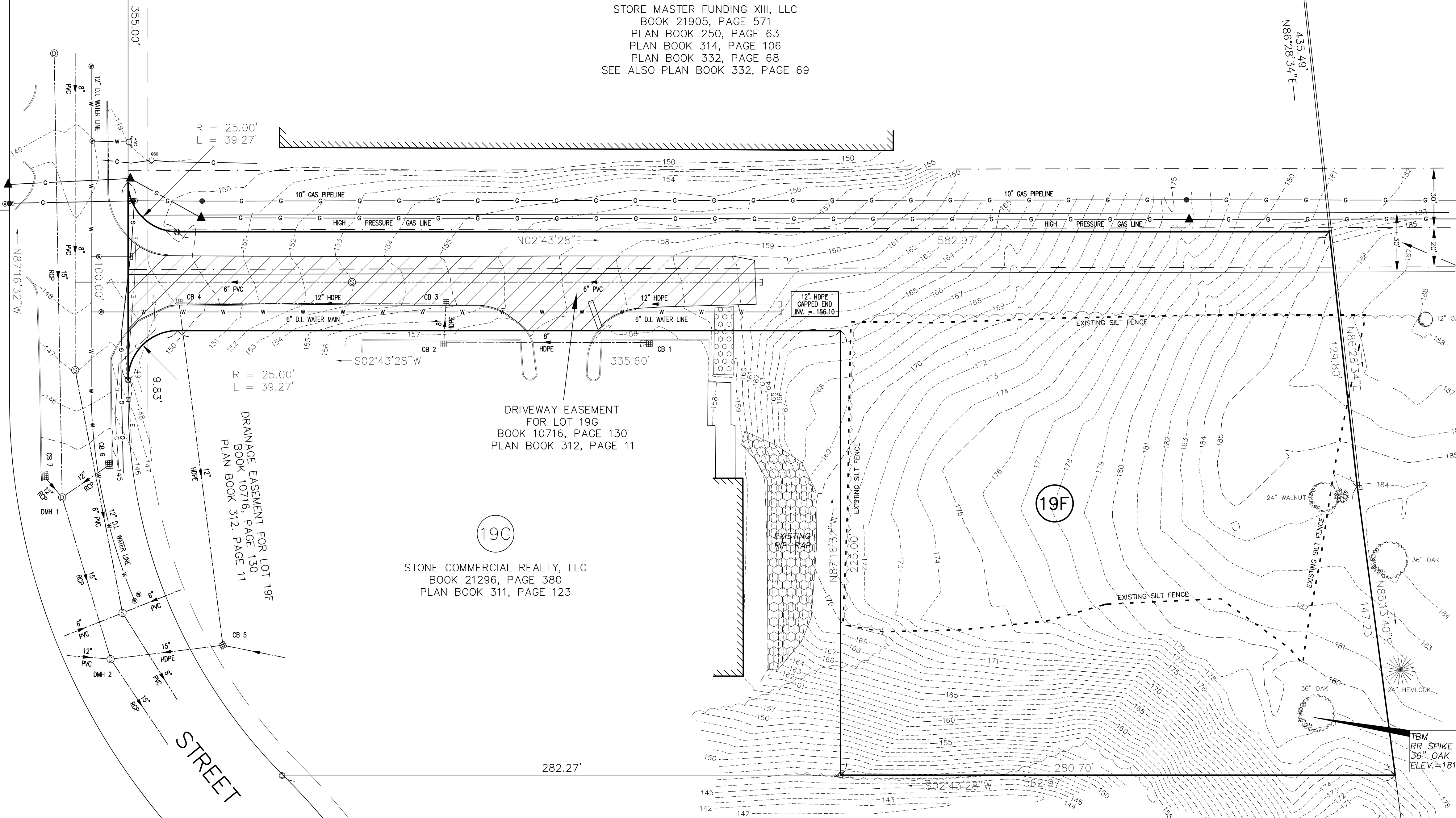
NOTE: LOCATION OF  
30' WIDE GAS PIPELINE &  
30' WIDE WATER LINE EASEMENTS  
PER PLAN BOOK 332, PAGE 69

30' WIDE TENNESSEE GAS  
PIPELINE COMPANY, L.L.C. EASEMENT  
BOOK 7745, PAGE 296

20' WIDE TENNESSEE GAS  
PIPELINE COMPANY, L.L.C. EASEMENT  
BOOK 23119, PAGE 141

30' WIDE TOWN OF AGAWAM  
WATER LINE EASEMENT  
BOOK 4792, PAGE 102

CITY OF AGAWAM #31182  
LAND COURT CERTIFICATE  
LAND COURT PLAN 30007B



19G

STONE COMMERCIAL REALTY, LLC  
BOOK 21296, PAGE 380  
PLAN BOOK 311, PAGE 123

19F

19E

SUFFIELD STREET PARTNERSHIP, LLP  
BOOK 13554, PAGE 334  
PLAN BOOK 314, PAGE 106

CB 1 RIM = 156.88 INV. OUT 8" HDPE = 154.18 SUMP = 153.4	CB 6 RIM = 144.11 INV. OUT 12" RCP = 140.14 SUMP = 140.1
CB 2 UNABLE TO OBTAIN RIM OR INVERTS (UNDER PARKED CAR)	CB 7 RIM = 144.10 INV. OUT 12" RCP = 140.15 SUMP = 140.1
CB 3 RIM = 154.82 INV. IN 8" HDPE = 151.19 INV. IN 12" HDPE = 151.10 INV. OUT 12" HDPE = 150.95 SUMP = 150.0	DMH 1 RIM = 143.86 INV. IN 12" RCP (CB 6) = 139.94 INV. IN 12" RCP (CB 7) = 139.94 INV. IN 15" RCP = 134.71 INV. OUT 15" RCP = 134.48 TOP OF SHELF = 135.32
CB 4 RIM = 148.98 INV. IN 12" HDPE = 145.47 INV. OUT 12" HDPE = 145.38 SUMP = 145.2	DMH 2 RIM = 140.24 INV. IN 15" HDPE = 134.89 INV. IN 12" PVC = 133.32 INV. IN 15" RCP = 133.31 INV. OUT 15" RCP = 133.17 TOP OF SHELF = 133.97
CB 5 RIM = 142.74 INV. IN 12" HDPE = (NOT VISIBLE) INV. IN ___ = (NOT VISIBLE) INV. OUT 15" HDPE = 136.04 ±	

NOTES:

- FOR REFERENCE TO ENCLOSED PERIMETER SEE BOOK 13554, PAGE 334 (PARCEL IV) AND PLAN BOOK 314, PAGE 106.
- UNDERGROUND UTILITY LOCATIONS SHOWN HEREON ARE BASED UPON SURFACE FEATURES AS LOCATED BY SURVEY AND AVAILABLE RECORD DATA, AND ARE APPROXIMATE. ACTUAL LOCATIONS SHOULD BE VERIFIED WITH THE APPROPRIATE UTILITY COMPANY AND/OR MUNICIPAL DEPARTMENT PRIOR TO FINAL DESIGN AND/OR CONSTRUCTION.
- SEE LETTER DATED OCTOBER 31, 2022 FROM GZA GEOENVIRONMENTAL, INC. 1350 MAIN STREET, SPRINGFIELD MA CONTAINING THEIR 2022 YEAR-END REPORT ON GZA'S EFFORTS AND FINDINGS TO IMPLEMENT THE APPROVED MESA PROJECT REVIEW CHECK LIST AND THE TURTLE PROTECTION PLAN (TPP), APPROVED ON APRIL 12, 2022 ON BEHALF OF SUFFIELD STREET PARTNERSHIP, LLP FOR THIS PROJECT. CONSTRUCTION ACTIVITIES OCCURRED AT THE SITE DURING THE ACTIVE AND INACTIVE 2022 TURTLE SEASON. THE EASTERN BOX TURTLE (TERRAPENE CAROLINA CAROLINA), - "EBT" - A STATE-LISTED SPECIES OF SPECIAL CONCERN, WAS IDENTIFIED BY THE MASSACHUSETTS NATURAL HERITAGE AND ENDANGERED SPECIES PROGRAM (NHESP) AS LIKELY BEING PRESENT AT THE SITE. NO TURTLES WERE LOCATED DURING THE 2022 SURVEY EFFORTS.

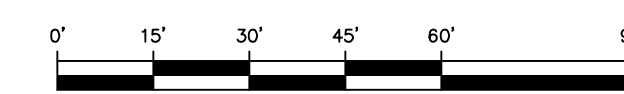
LEGEND

- IRON PIPE FOUND
- IRON BAR FOUND
- 1' CONTOUR INTERVAL
- 5' CONTOUR INTERVAL
- SPOT ELEVATION
- SANITARY SEWER/MANHOLE
- UTILITY POLE
- EXISTING SILT FENCE

SHEET 1 OF 3

EXISTING CONDITIONS PLAN OF LAND IN  
AGAWAM, MASSACHUSETTS  
PREPARED FOR  
SUFFIELD STREET PARTNERSHIP, LLP

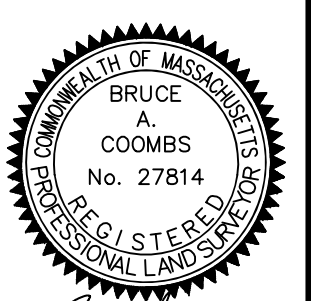
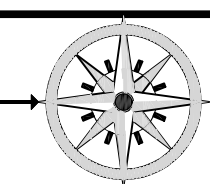
SCALE: 1" = 30'



DATE: NOVEMBER 2, 2022

**HERITAGE**  
LAND SURVEYING & ENGINEERING, INC.

241 COLLEGE HIGHWAY & CLARK STREET  
POST OFFICE BOX 90  
SOUTHAMPTON, MASSACHUSETTS 01073-0090  
(413) 527-3600  
INFO@HERITAGESURVEYS.COM



JOB # 8340-220328 DWG # 8340SU01 MAP # 8340-221102



