



TOWN OF
Agawam
MASSACHUSETTS

2019

Open Space & Recreation Plan

Town of Agawam

Contents

Plan Summary.....	1	Community Vision.....	44
Introduction.....	2	Planning Process & Public Participation.....	44
Community Profile.....	2	Statement of Open Space & Recreation Goals.....	44
Quick Facts.....	3	Analysis of Needs.....	45
Community Setting.....	5	Summary of Resource Protection Needs.....	45
Regional Context.....	5	Summary of Community Needs.....	46
History of the Community.....	7	Management Needs & Potential Changes of Use.....	46
Population Characteristics.....	7	Goals & Objectives.....	48
Growth & Development Patterns.....	8	Five-Year Action Plan.....	49
Infrastructure.....	11	Responsible Party.....	49
Long-Term Development Patterns.....	13	Timeline.....	49
Environmental Inventory & Analysis.....	16	Funding.....	49
Geology, Soils & Topography.....	16	Goal 1.....	50
Landscape Character.....	18	Goal 2.....	52
Water Resources.....	18	Goal 3.....	54
Vegetation.....	20	Goal 4.....	56
Fisheries & Wildlife.....	21	ADA Self Evaluation.....	58
Scenic Resources & Unique Environments.....	25	Public Comments.....	59
Environmental Challenges.....	32	References.....	60
Farmland.....	37	Appendix.....	61
Inventory of Lands of Conservation & Recreation Interest.....	38	Chapter 61 Lands.....	61
Lands of Interest Ownership, Management & Use Matrix.....	40	Community Survey Results.....	64

Maps

Map 1: Population Density	4
Map 2: Community Context.....	6
Map 3: Land Cover & Land Use.....	10
Map 4: Major Roadways.....	12
Map 5: Generalized Zoning.....	15
Map 6: Soils & Geological Features	17
Map 7: Water Resources & Flood Zones	19
Map 8: BioMap 2	23
Map 9: Natural Heritage Atlas.....	24
Map 10: Unique Features	30
Map 11: Environmental Justice Areas.....	36
Map 12: Open Space Inventory	39

DRAFT

Plan Summary

The 2019 Update to Agawam's **Open Space and Recreation Plan (OSRP)** provides a framework to guide community policies and future actions. It examines the Town's need for new or improved conservation areas, conservation land management, recreational facilities, and preserved land. Since 2014, Agawam has experienced an increase in population with shifting demographics—an aging population, and an increase in younger families. This plan also reflects the findings of the 2018 **Parks and Recreation Needs Assessment and Master Plan (PRNAMP)** and works in concert with them.

To balance issues of development, land preservation, and community needs, this Plan provides an assessment of existing conditions and trends in Agawam, identifies the town's needs, and sets out the community's open space and recreation goals and objectives.

Due to the in-depth nature of the PRNAMP, this iteration of the OSRP focuses more on the preservation of open space and sensitive habitats but incorporates PRNAMP's recommendations as well. Like the PRNAMP, this plan acknowledges the need for geographic balance in Parks and Recreation facilities, to maintain Agawam's existing resources, and to improve accessibility and programming for all residents.

This Plan builds upon previous OSRPs and was developed by the steering committee with input from the public through an online community survey and at public meetings and workshops.



School Street Barn, School Street Park, Magicpiano

Introduction

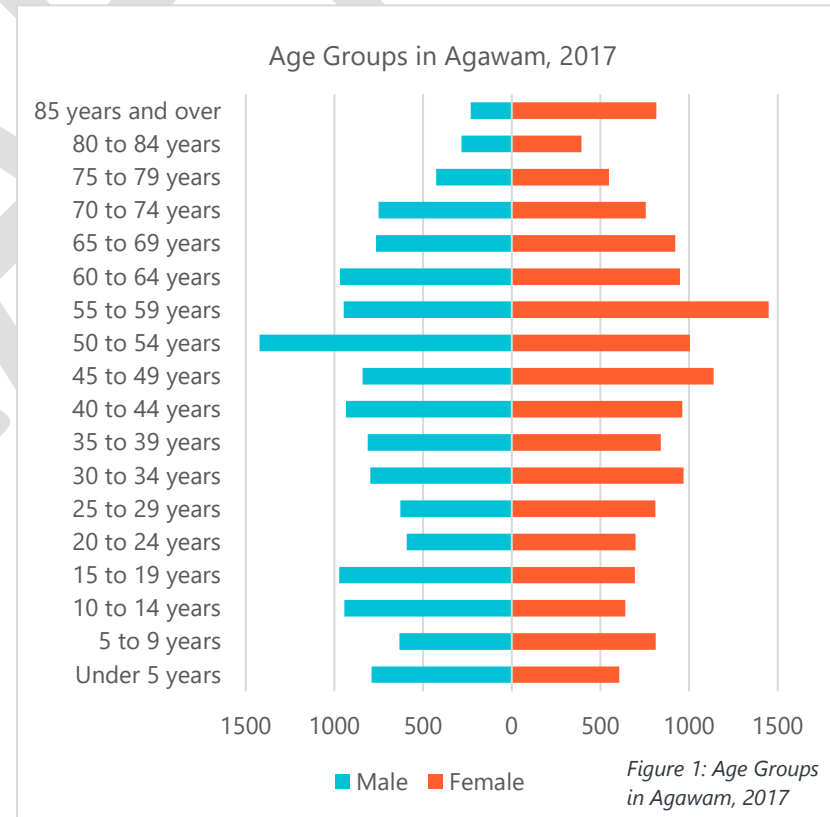
The Town of Agawam is located in Hampden County within the Springfield Massachusetts Metropolitan Area. Settled in 1636 and Incorporated in 1855, Agawam is governed by a city form of government but maintains "town" in its official name.

Covering 23.2 square miles of land area, Agawam is comprised of two distinct areas in terms of U.S. Census data: Agawam proper and an unincorporated section, Feeding Hills. A former agricultural community, Agawam developed between the banks of the Connecticut River to the east and the Metacomet Ridge to the west. The northern border of the town is bound by Robinson State Park and the Westfield River. To the south of the town's border are the rolling agricultural fields of Suffield, Connecticut. Today the town enjoys recreational facilities that dot its natural landscape including the Connecticut River Walk, the newly designed School Street Park, and a municipally owned golf course.

Community Profile

Agawam has an estimated total population of 28,748 – up 1.1% from the 2010 census (ACS, 2017). As with Hampden County in general, the town anticipates small continued growth moving into the next decade. The Town of Agawam has seen a growing shift in demographics since 2010. The median age increased from 44.4 to 45.7. By contrast, the Commonwealth of Massachusetts median age is 39.4, up from 39.1. Hampden County's median age rose slightly from 38.6 in 2010 to 38.7 in 2017. The town has seen small increases in the 20-34 and 65+ age groups, while the 35-64 age cohort has experienced a small decline. Students aged 10-14 and 15-19 also experienced decreases, while children 0-9 increased slightly. Overall, populations in all school grades have declined from 2010 enrollment figures.

The Feeding Hills area (Tract 8132.05) is the largest of the town's census tracts at 10.06 square miles. It also has the largest population (7,120 or 25% of the town's population) but the second lowest population density at 708 people per square mile (see Map 1). This tract has the highest median age at 49.5, 3.8 years above the Town's median of 45.7. These neighborhoods have the second highest percentage of prime working age population (ages 35-64) at 45.6%, and the lowest proportion of children under the age of 20 (17.9%) number (1,540) in the community. These neighborhoods are served by three private golf courses and a playground at Clark Elementary School.



The northwestern corner of Agawam (Census Tract 8132.04) is the least densely settled area of the community (677 per square mile), containing the smallest portion of the town's population (11.5%) but the largest amount of park space. This area has the lowest portion of people aged 20-34 (10.8%) and the highest portion of people aged 35-64 (45.7%). Most of the area in this census tract consists of Robinson State Park as well as a municipal golf course and Ridgeview Park.

North Central Agawam, (Census Tract 8132.07) has the highest population density at 2,446 people per square mile. This area has the youngest population within the town with a median age of 40.6, about 6.9 years younger than the town median. This is due, in part, to having the third highest percentage of children aged 0-19 (21.6%) and the lowest percentage of people aged 65 and up (12.6%). Neighborhoods in this area are primarily served by the athletic fields at Agawam High and Middle Schools, the dog run, skate park, and playground at Robinson School. Nearby is also Robinson State Park.

Northeastern Agawam (Census Tract 8132.09) has the highest proportion of residents age 65+, significantly higher than the town as a whole (30.7% for the Tract versus 20.5% for the Town). It has the lowest portion of people aged 20-34 (10.9%) and aged 35-64 (37.3%). It has the second highest density, at 1,974 people per square mile. This area is primarily served by Perry Lane Park, Phelps Elementary School playground, and School Street Park.

The central area of town, Census Tract 8132.06, has the third largest population density, at 1,876 people per square mile, and a total population of 4,203. 24.3% of the population in this area is under the

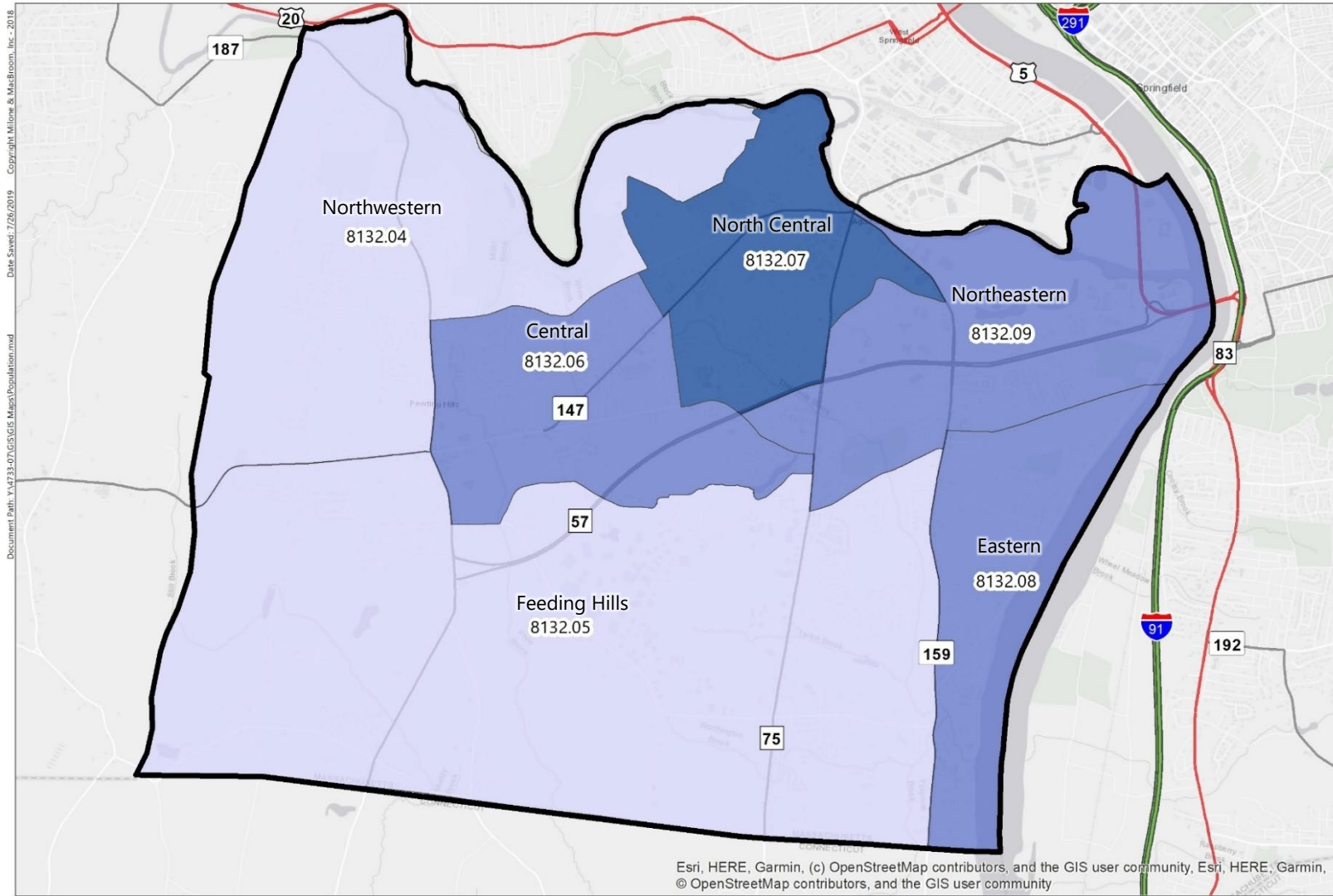
age of 20, the highest portion in the community. These neighborhoods are served by the athletic fields at Agawam Junior High School, Granger Elementary, Sacred Heart, and the facilities at the Agawam Sportsman Club. This area is also in close proximity to Robinson State Park.

Eastern Agawam, Census Tract 8132.08, has the largest percentage of 20-34 year olds (21.4%) and the second lowest proportion of residents who are aged 65+ (14.5%). This area is less densely populated at 1,445 people per square mile. This area is served by the River Walk, Borgatti Field, as well as Meadowbrook Park.

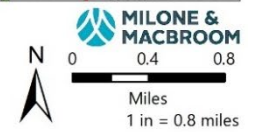
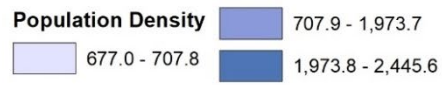
Quick Facts

- North Central Agawam (8132.07) has the highest population density at 2,446 persons per square mile. It also has the lowest median age throughout the entire town (40.6)
- Northeastern Agawam (8132.09) has the highest number of children aged 0-19 (1,311), and the highest number (1,917) and percentage (30.7%) of residents aged 65+. It is served by the most recreation resources.
- Eastern Agawam (8132.08) has the highest percentage of people aged 20-34 (21.4%).
- Feeding Hills (8132.05) covers the most land area (41% of the town) and has the second lowest density (677 people/square mile). It also has the highest number (3,250) and percentage (45.6%) of residents aged 35-64. It is served by the fewest recreation resources.

Map 1: Population Density



Population in 2017
 Open Space & Recreation Plan
 Town of Agawam



Community Setting

Regional Context

Agawam is the southernmost community in Massachusetts on the west bank of the Connecticut River. Located in the southwestern portion of the state, Agawam is within a short distance from many major New England Metropolitan areas, including Hartford which is only 25 miles to the south (see Map 2). Agawam is only minutes away from downtown Springfield and is included in the Springfield-Holyoke-Chicopee Standard Metropolitan Statistical Area (SMSA). As a central community in the SMSA, Agawam has shared in the growth experienced by the area and its strategic location is expected to play a critical role in its continuing growth.

Agawam is in close proximity to major transportation crossroads, including interstates 90, 91, 291, and 391. Locally, Route 5 is the primary north-south route and Route 20 the major east-west route.

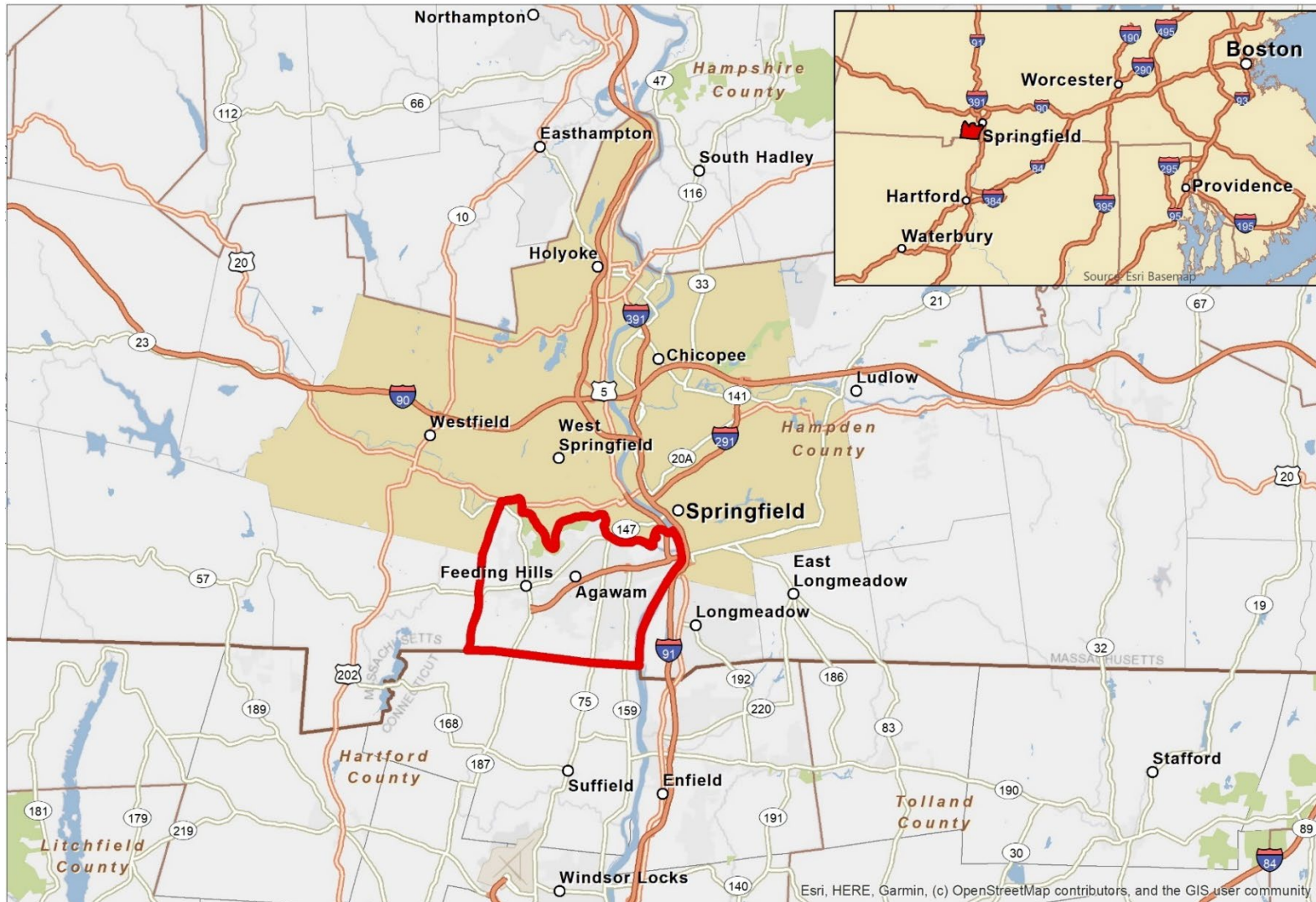
Agawam's direct access to the City of Springfield is by way of Route 57, a limited access four-lane divided highway. Route 57 provides direct access to the SMSA from all sections of the community. Agawam is only 10 miles from Bradley International Airport, New England's second-busiest airport.

Agawam's physical boundaries consist of three impressive natural features. The Connecticut River to the east provides the community with five miles of river frontage on New England's largest river. To the north, the Westfield River forms an eight-mile boundary, most of which is located adjacent to Robinson State Park, Agawam's largest park. To the west, Agawam is separated from its neighbor Southwick by Provin Mountain. Its summit at 640 feet is the highest point in Agawam. To the south, Agawam is bordered by the State of Connecticut.

Key to Agawam's development is its convenient location to jobs. Though the community boasts the largest industrial park in the region, the Agawam Regional Industrial Park, in 2015 only about 20.1% of Agawam's working residents (2,181, people) were employed in Agawam. Springfield is the largest employer of Agawam residents with 21.3% (2,936 people) of the total. Nearly 17.2% of Agawam workers (2,363 people) commute to jobs in Connecticut.

Agawam can be characterized as a residential suburb in a maturing New England town. The majority of its housing units (66.3%) are detached single-family units (ACS, 2017). There is no traditional downtown or central business district. Agawam perceives itself as a small town and has maintained that image in sharp contrast with its neighbor to the north, West Springfield. The desire to remain characterized as a small town was clearly vocalized by its residents when in 1989, they voted to be called the "Town of Agawam" instead of the "City of Agawam."

Map 2: Community Context



Community Setting
Open Space & Recreation Plan
Town of Agawam



0 4
Miles
1 in = 4 miles



History of the Community

In 1631, two members of the Agawam tribe from the Pioneer Valley traveled to the Massachusetts Bay Colony in Roxbury (now Boston) to request that they settle in the valley. The goal was to have the English protect the Agawam tribe from the more aggressive Mohawk tribe to the north. William Pynchon, desirous of expanding his fur trade, explored the area himself in 1635 and decided to settle on the western shores of the Connecticut River. This area is now known as Agawam.

The first house in Massachusetts west of the Roxbury settlement was built in Agawam Meadows in the spring of 1635. Agawam, along with parts of Springfield and West Springfield, were purchased from the Native people on July 15, 1636. This new settlement or "plantation" was known as Agawam until it changed to Springfield in 1640.

In 1638, it was voted that any man could graze his livestock freely in the hills above the meadows on the west side of the Connecticut River. The name "Feeding Hills" comes from this use of those unoccupied lands. In 1654, John Pynchon, son of William, led the first cattle drive ever in this country. John and his Puritan cowboys drove their cattle from Feeding Hills to the Roxbury settlement.

Agawam thrived as a farming community even after 1800. The first cotton mill in western Massachusetts was built in 1810 on what is now Six Flags New England. Agawam also had many lucrative crops such as wool and tobacco. The present Agawam Regional Industrial Park was formerly land belonging to the Cuba-Connecticut Tobacco Company. This company was one of the largest shade-grown tobacco concerns in the East (Agawam Open Space Plan, 1986). Agawam was incorporated as a town in 1855.

The Connecticut and Agawam (now Westfield) Rivers separate the land into three areas. Residents, who lived on the East side of the

Connecticut River but owned land on the West side of the Connecticut River, needed access to their farm property. The first solution was a ferry system that crossed both rivers. This system was used until the old South End Bridge was opened in 1879.

The changes that occurred between 1902 and 1936 were only a hint of what was to come. The emergence of the suburban lifestyle and the flight of the middle classes from Springfield during the mid-twentieth century changed both the landscape appearance and the economic character of Agawam (Master Plan, 1976).

Population Characteristics

During the 1950's, 1960's, and 1970's, the population in Agawam more than doubled, resulting in increases of 54%, 38%, and 21% respectively. Agawam witnessed its smallest population growth in 40 years between 1980 and 2000. The population increased a minimal 4% during this time period.

As of 2017, the population was 28,748, showing very little change in population since 2010, when the population was 28,438. The 2017 population per square mile was 1,180 with 12,183 housing units at an average density of 499.9 per square mile. Agawam is considered primarily suburban in nature with no historic downtown, though the town does have three historic centers: Main Street Center, North Agawam, and Feeding Hills. Based on income, North Agawam is one of Agawam's Environmental Justice Neighborhoods (see Map 11). There is a concentration of two, three, and four-family dwellings which served mill housing in the late 1800 and early 1900's. Though fairly densely developed, attempts have been made to identify locations for pocket parks in this neighborhood.

The characteristics of Agawam's population have changed during the last two decades. Most notably, the number of persons 65 years of

age and older increased from 5,175 in 2012 to 5,891 in 2017. The number of older residents as a percentage of the total population also increased from 18.1% to 20.5%. In 1980, the number of residents 65 years and older was 12% of the community's total population. The trend in the number and percentage of older residents is expected to continue.

In 2017, there were 11,750 households in Agawam with an average of 2.4 persons per household. Agawam's median household income was \$61,919 which was lower than the State's median household income at \$74,167. 9.4% of Agawam's residents live below the poverty level, which is significantly lower than the State's 11.1% (ACS 2017).

Agawam's unemployment rate in 2013 was 7.7% but in 2017 it fell to 2.7%, lower than the State unemployment rate of 4%. As of 2017, there are about 15,291 residents age 16 and older in the labor force. According to the Occupational Employment and Wage Statistics program, in 2018, there was a total of 1,082 employers (ACS 2017).

The total number of housing units increased from 12,070 in 2010 to 12,183 in 2017. 69% of the new units are served by public water and by public sewer. This represents an increase of 78 new units. New construction of single-family homes continues to fall from an average of 70 permits per year in the early 1990's to an average of 30 per year since 2007. Though Agawam's vacancy rate is low, the drop in housing starts may relate to the dwindling availability of buildable land.

Growth & Development Patterns

The Town of Agawam has experienced substantial growth in its residential sector during the past five decades during which time the community has experienced a transition from a rural farming community to a bedroom suburb of the Springfield and Hartford

metropolitan areas. The metamorphosis was spurred by improvements to Routes 5 and 57 and the construction of Route 91. Also instrumental to this growth was the availability of large tracts of inexpensive undeveloped land and minimal growth controls. The town's population has nearly tripled since 1950 when it had approximately 10,000 residents.

Agawam has witnessed a dramatic shift in land use patterns associated with the conversion of farmland to residential uses. Farmland acreage has decreased dramatically since 1950. The amount of land in agricultural use has dropped by over 70%. In 1950, there were approximately 7,500 acres of land in agricultural use. In 2016, there was less than 1,800 acres.

In recent years, Agawam has seen subtle changes in land use (see Table 1). Industrial lands have grown by 32.5% from 2005 to 2016. Undeveloped land has been reduced by 392 acres, a change of 6.1% over the same time period. Open space and public lands have nearly doubled, and agricultural lands have increased by 3.8%. These positive changes could in part be attributed to the proactive work Agawam has taken over the last decade.

Land Use Change in Acres, 2005-2016				
Land Use Types	2005	2016	Change	Percent Change
Residential	4,483	4,483	0	0.0%
Commercial	310	309	-1	-0.3%
Industrial	591	783	192	32.5%
Urban Open/Public	289	572	283	97.9%
Transportation	253	253	0	0.0%
Outdoor Recreation	793	793	0	0.0%
Agricultural	1,727	1,792	65	3.8%
Undeveloped	6,428	6,036	-392	-6.1%
Water	620	636	16	2.6%

Source: Pioneer Valley Planning Commission

Table 1: Land Use Change

According to data from the Pioneer Valley Planning Commission, there was a 52% drop in farmland acreage from 1971 to 2005. To preserve some of Agawam's remaining farmland, the town, in an unprecedented move, purchased the Tuckahoe Turf Farm in 1993. The farm contains 292 acres and had previously been used to raise turf.

Also, since the 1980's, Agawam has encouraged farmers to participate in the Agricultural Preservation Program (APR). To date, nine farms have received APR designation from the Commonwealth, resulting in the preservation of over 390.5 acres. This is an increase of one farm and 120.7 acres since 2014.

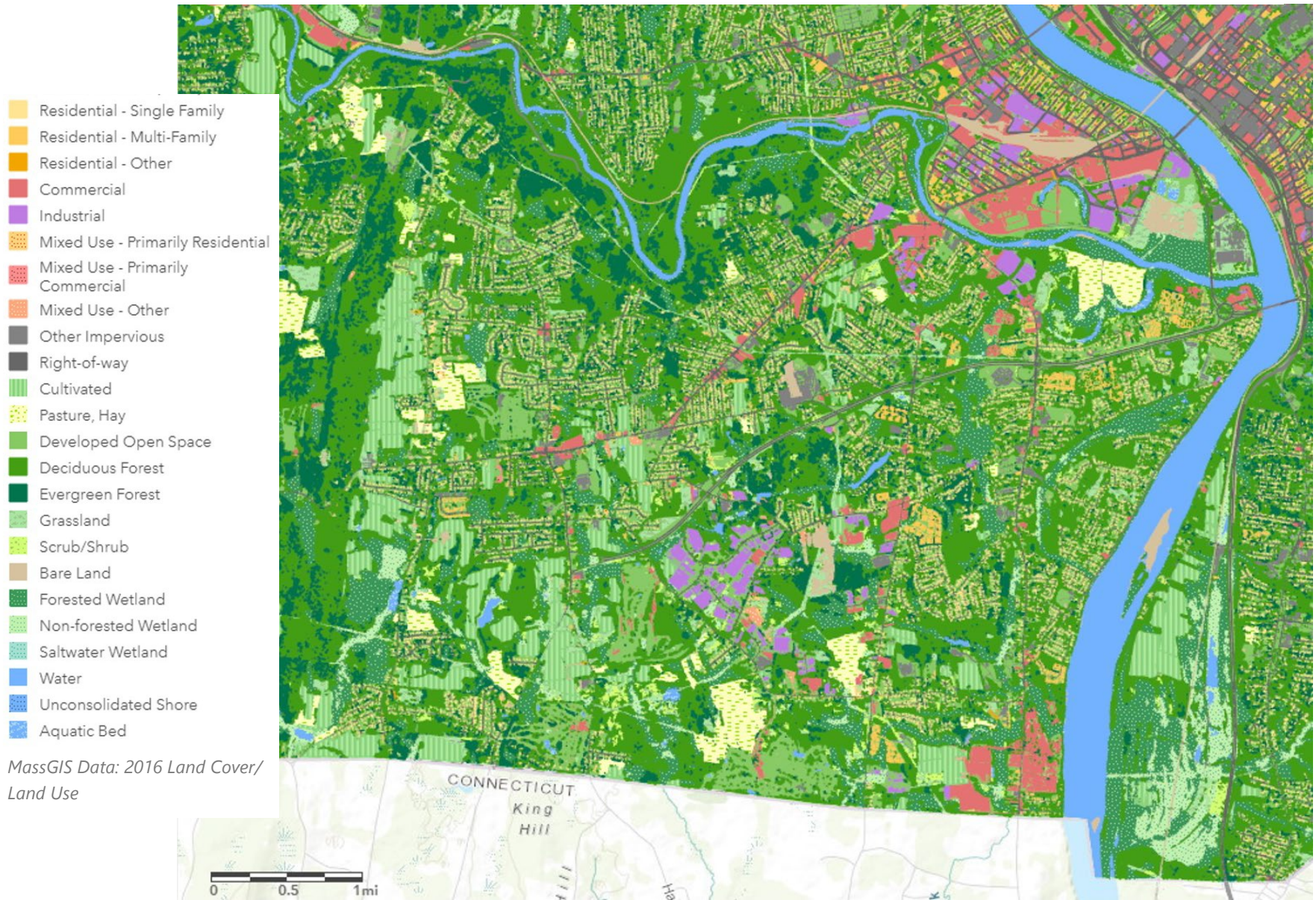
Since the town's adoption of the Community Preservation Act (CPA), there exists a local source of revenue to support future APR applications by providing the local match for the State's purchase of the development rights.

Agawam's farmlands face continued development pressure. They represent a large proportion of the remaining undeveloped, buildable land left in town. Most other areas not yet developed are either publicly owned, or have slope, soil, or flood hazard constraints. As such, farmlands are far more vulnerable than the town's other open spaces. The forces that turn farms into subdivisions have resulted in the loss of a great deal of open space and have changed the overall character of the town. The fertile lands which originally brought settlers to Agawam almost 350 years ago could be lost forever.

In addition to purchasing farmland and undeveloped land, the town adopted an Open Space Residential Development Ordinance in 2006 to encourage the clustering of residential homes. It is allowed by right in three residential districts. It is encouraged by the Planning Board in areas containing wetlands, sensitive species, and agricultural lands.

The impacts of the Great Recession are still being felt, when considering the rate of development. Only four subdivisions have been approved in the last five years, three of which are for commercial uses. With an improved economic climate, this trend is expected to reverse with more and more development pressure expected to come to bear on the remaining agricultural lands and open spaces.

Map 3: Land Cover & Land Use



Infrastructure

Transportation System

Agawam is served and accessed by a variety of roads ranging from high volume expressways (Route 5 and Route 57) to quiet local streets. Due to the town's growing population, many roads and intersections in town have undergone widening in recent years. Others may undergo similar expansion in the years ahead.

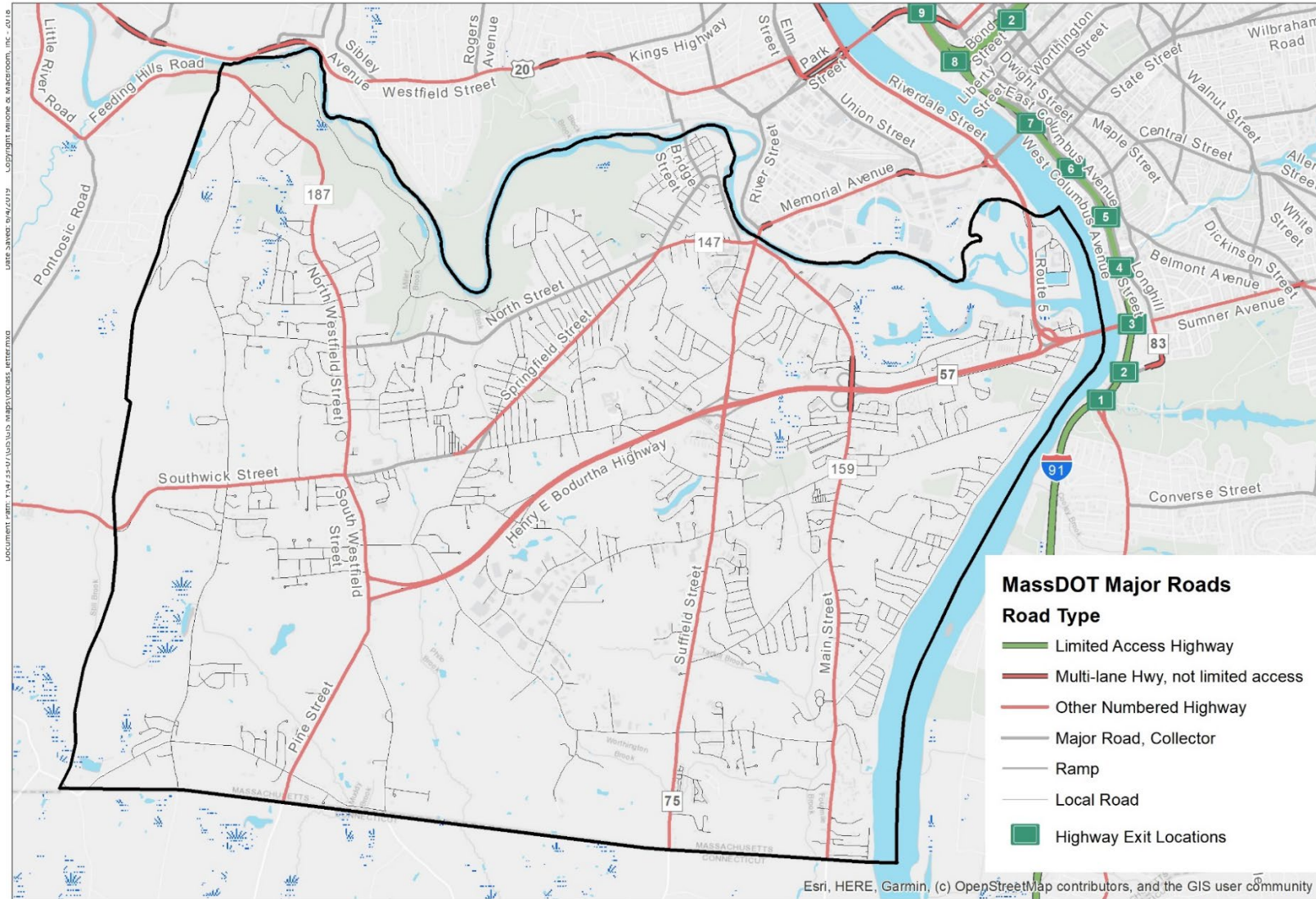
Agawam began a program to construct bicycle- and pedestrian-related facilities in the 1990's, in 2004 the Connecticut Riverwalk and Bikeway was opened. It consists of a 1.7-mile off-road multi-use trail. Phase II of this project, the Riverwalk Loop, commenced construction during the summer of 2014. This phase will connect to the Riverwalk to consist of a five-mile bicycle-friendly loop. Phase I and II of the School Street Park also contain bicycle and pedestrian facilities. The 2014 Five Year Action Plan contains a recommendation for a town-wide Pedestrian and Bicycle Compatibility Study, which was conducted in 2015-2016.

Agawam is part of the Pioneer Valley Transit Authority, which provides bus service to virtually all locations in the Pioneer Valley.



Massachusetts State Route 57, Doug Kerr

Map 4: Major Roadways



Road Classification
 Open Space & Recreation Plan
 Town of Agawam

Esri, HERE, Garmin, (c) OpenStreetMap contributors, and the GIS user community

MILONE & MACBROOM

N

0 4000 feet

1 in = 4,323.49 feet

Water Supply System

Agawam's total annual water consumption in 2012 was approximately 1.42 billion gallons. The water is supplied by the Agawam Water Department, which purchases water from the Springfield Water and Sewer Commission (SWSC) and primarily comes from the Cobble Mountain Reservoir. Old and deteriorating distribution mains occasionally cause discoloration of the water. This has been remedied in the past by flushing out the water lines or replacing them with new cement-lined ductile iron water mains. In 2016, the City of Springfield finished the multiyear effort to replace the large water main from Provin Mountain to the Connecticut River.

All water purchased from the SWSC is treated by coagulation, filtration, and chlorination prior to delivery. There are no contract limitations on the amount of water Agawam may draw from the SWSC. SWSC withdrawal from the reservoir is permitted by the Department of Environmental Protection, Division of Water Supply.

Sewer System

Much of the existing sanitary sewer system in the Town of Agawam was constructed many years ago and has been extended from time to time as the demand arose. Beginning in the early 1970's, the town took advantage of available state and federal grants to expand its sanitary sewer system to a point where the town is 88% sewered.

The existing system can generally be described as consisting of two sections: the flow from the low easterly section of town along the Connecticut River which is pumped to the treatment plant and the flow from the higher plateau west of Main Street which is collected by gravity mains to strategic points where it enters systems located in Walnut Street and School Street, and is then pumped to the treatment plant.

The sewage treatment plant is owned by the SWSC and is located on Bondi's Island in the extreme northeast section of Agawam where the sewage receives primary and secondary treatment and the effluent is discharged in the Connecticut River. The Town of Agawam pays its share of the operation and maintenance costs of the sewage treatment plant based on the volume and strength of the sewage received from Agawam. The SWSC runs an Industrial Pretreatment Program which monitors sewage discharged by businesses and industries in the Town of Agawam.

The Town of Agawam started expanding the sanitary sewer system into the Southwestern most section of town. Sanitary sewer mains were laid, as part of Phase I, from the overpass at Route 57 and Shoemaker Lane along Route 57 and down South Westfield Street to approximately the old County Training School, now Solider On veteran's housing, was completed in 2010.

Future phases of sewer expansion into the southwestern part of town, if funded, will provide a relief to properties with failing septic systems and will also allow further development of the area. Development has been difficult to date because the in-situ soils are not very favorable to onsite sewage disposal systems (septic systems).

Long-Term Development Patterns

Agawam last undertook a comprehensive rewrite of its Zoning Ordinance in 1950. Since that time, the only revisions to the Zoning Ordinances that have been adopted are limited in scope and effect on development. In 1983, the Office of Planning and Community Development was created and staffed. At that time, the town funded the creation of the position of Director of Planning and Development.

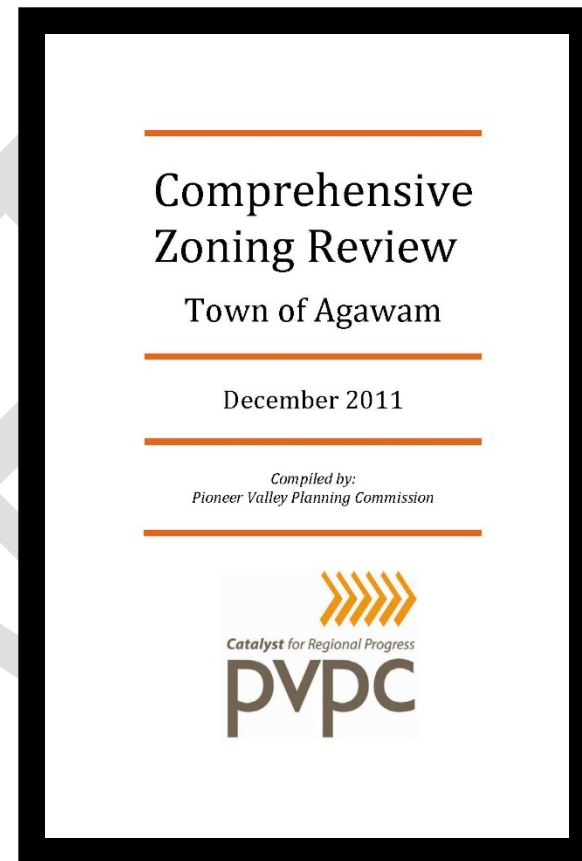
The 2011 Comprehensive Zoning Review was prepared by Pioneer Valley Planning Commission. The purpose of the report was to comprehensively review Agawam's zoning provisions and to recommend zoning amendments, with priority given to those provisions in violation of state or federal laws, and to review for consistency with the *Valley Vision, Regional Land Use Plan* and pending Zoning Reform legislation. Agawam implemented some key recommendations related to residential development:

- Revised the definition of family to comply with Fair Housing laws.
- Revised the definitions of apartment house, dwelling, lodging house, and single-family dwelling.

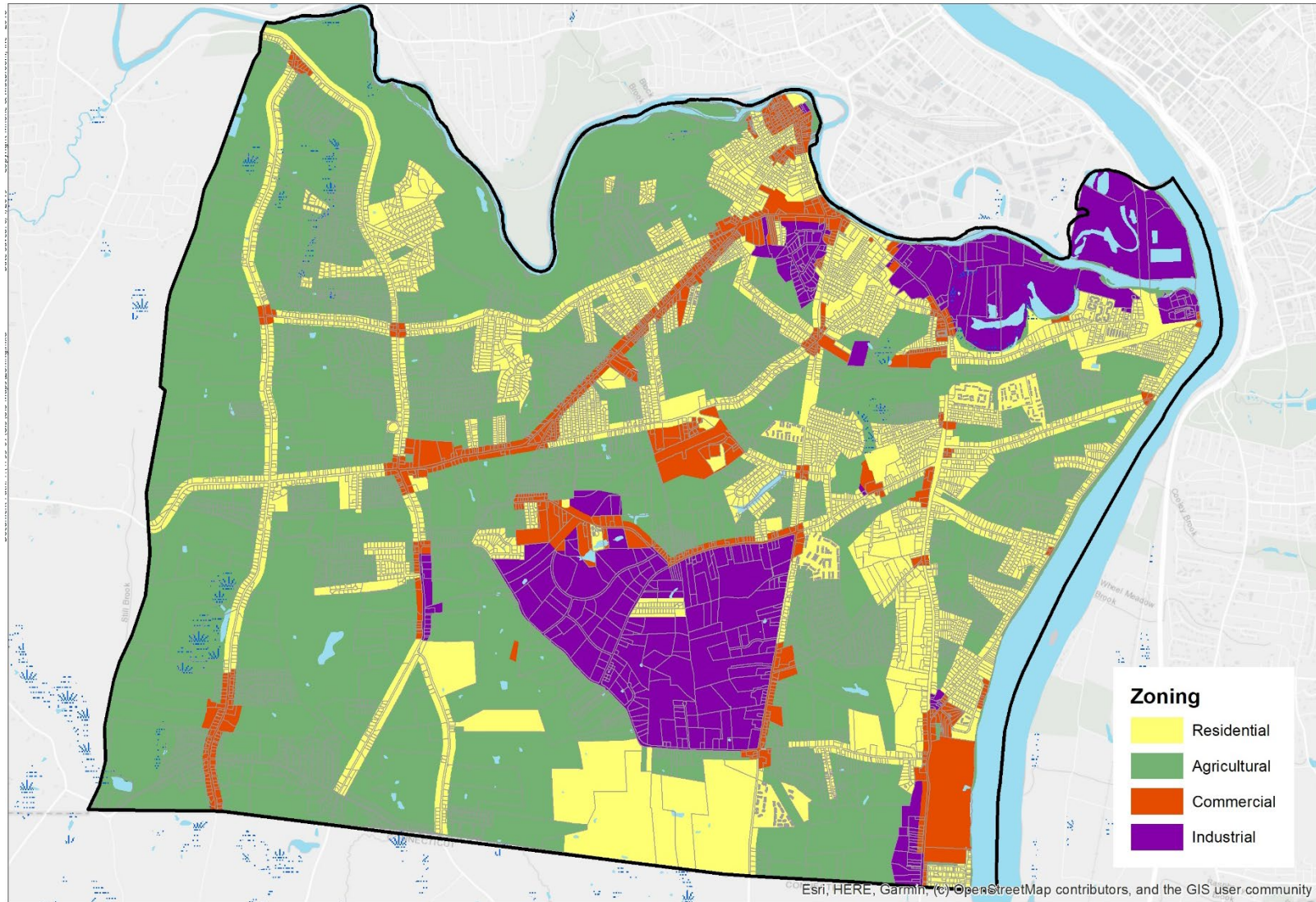
However, a comprehensive zoning revision was not enacted.

There have been successful attempts at changing Agawam's zoning. The Town of Agawam has adopted the Federal Emergency Management Agency's (FEMA) updated Flood Insurance Rate Maps (FIRM) effective July 16, 2013. These maps were approved by the City Council in 2013. Dwellings existing prior to adoption of the floodplain zone are permitted, however, substantial improvements require a special permit. The district prohibits installation of septic tanks, leaching fields, and on-site waste-disposal systems. In addition, the district prohibits any development of any building, other than minor buildings incidental to permitted flood control, recreation, or agricultural uses.

In addition to the 2004 Community Development Plan, the 2010 Economic Development Plan and 2011 Comprehensive Zoning Review recommended mixed use development regulations. In 2015, these recommendations were partially implemented with the adoption of Mixed Use Business C District for the Walnut Street Extension area.



Map 5: Generalized Zoning



Generalized Zoning
Open Space & Recreation Plan
Town of Agawam

Esri, HERE, Garmin, (c) OpenStreetMap contributors, and the GIS user community

MILONE & MACBROOM
0 4,000
feet
1 in = 3,993.71 feet

Environmental Inventory & Analysis

Geology, Soils & Topography

The type and intensity of development which a piece of land can support without negative impacts such as severe erosion or septic system failure, is based in large part upon the characteristics of the soil. Soil information gives the developer some indication of expense involved in developing his property. It also alerts town boards and residents to those areas which, due to soil characteristics, face development limitations.

Agawam's wealth of rich, level, and well-drained soils served as the basis of its early growth as an agrarian community, and later to attract the varied urban and suburban uses it now hosts. Along the banks of the Connecticut and Westfield Rivers, alluvial soils such as Hadley fine sandy loam dominate. Through the central and southern sections of town terrace soils like Agawam fine sandy loam, and lake sediments such as Ninigret and Buxton silt loam, are in evidence.

The town contains a sizeable proportion of poorly drained wetland soils in some low-lying areas and some stony glacial till soils in the Provin Mountain area (see map 6). These are not suitable for development or most types of agriculture without expensive engineering modifications. Although elevations in Agawam range from 45 feet above sea level at Bondi's Island on the Connecticut River to 640 feet at the summit of Provin Mountain, most of the town's land lies between the 100-foot and 250-foot elevation contours and is relatively flat or gently rolling. As such, a great percentage of town is physically suitable for development.

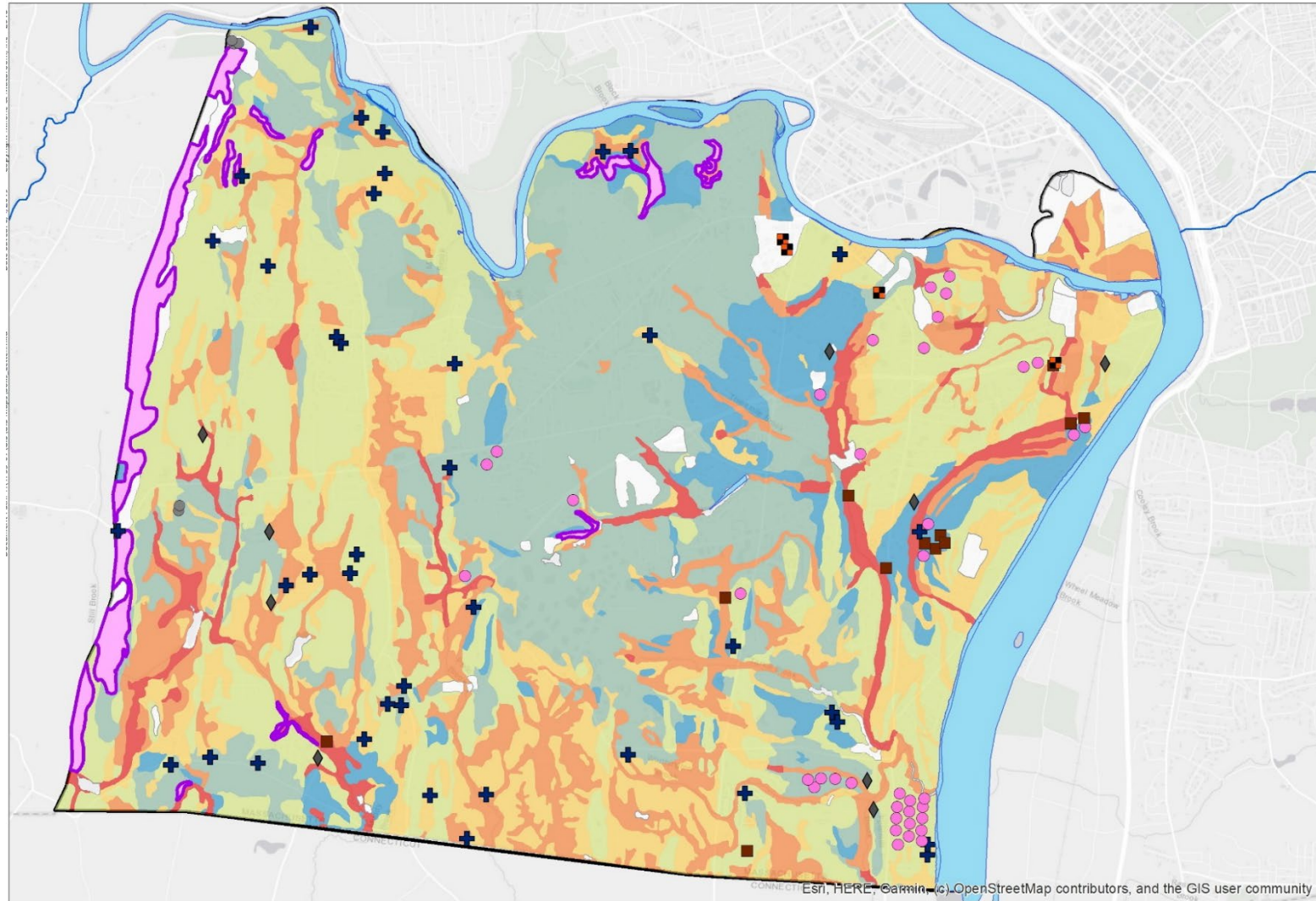
In some of the low-lying areas, however, wetness and flooding serve to place constraints on development. A total of 1,600 acres of land lies within the floodplain of the Connecticut and Westfield Rivers. Much of this remains open space with great potential for passive recreational pursuits such as hiking and nature study. In addition, these lands provide a valuable flood prevention function as natural storage areas for flood waters.

Steep terrain and shallow soils on the slopes of Provin Mountain and Liswell Hill have also precluded development to a large degree. As a result, much of Agawam's western edge remains open space of high scenic quality, offering vistas of the Connecticut River Valley.



Boat Ramp at Bondi's Island, Rusty Clark

Map 6: Soils & Geological Features



Soils & Geological Features
 Open Space & Recreation Plan
 Town of Agawam

- | | | | |
|------------------------------|-----------------------|------------------------------------|---------------------------|
| NRCS Special Features | Brownfields | NRCS Soils - Drainage Class | Well drained |
| ◆ Gravel pit | ■ Spoil area | ⊖ No Data | ■ Moderately well drained |
| ● Rock outcrop | ◆ Stripped land | ⊖ Excessively drained | ■ Poorly drained |
| ⊕ Wet spot | ⊕ NRCS - Steep Slopes | ⊖ Somewhat excessively drained | ■ Very poorly drained |

MILONE & MACBROOM

0 4,000
 Feet
 1 in = 4,000 feet

N

Landscape Character

Agawam is located at the confluence of two rivers, the Connecticut and the Westfield. Much of the eastern portion of the community is the floodplain of these two rivers. The landscape then gently slopes to the west where the Provin Mountain range rises prominently.

The Connecticut River is in view as one travels along River Road. The view of the Connecticut River has been enhanced by the development of the Connecticut Riverwalk and Bikeway. The Riverwalk provides three scenic overlooks with benches for viewing the river and its associated wildlife. The path has become a popular destination for many Agawam residents.

Robinson State Park encompasses most of the Westfield River frontage which also marks the town's northernmost boundary. Unlike the Connecticut River frontage, the Westfield River may only be seen from within the Park. Even within the Park, the River may only be seen by climbing down steep embankments. The park itself, however, boasts hardwood forests which can be enjoyed while walking along the scenic paths in this 800-acre nature preserve.

Provin Mountain with an elevation of 640 feet and Liswell Hill with an elevation of 360 feet provide spectacular views of the City of Springfield, the Connecticut River, and the picturesque valleys and farmland. The views from Liswell Hill have been preserved by the acquisition of the Agawam Municipal Golf Course which sits atop this hill.

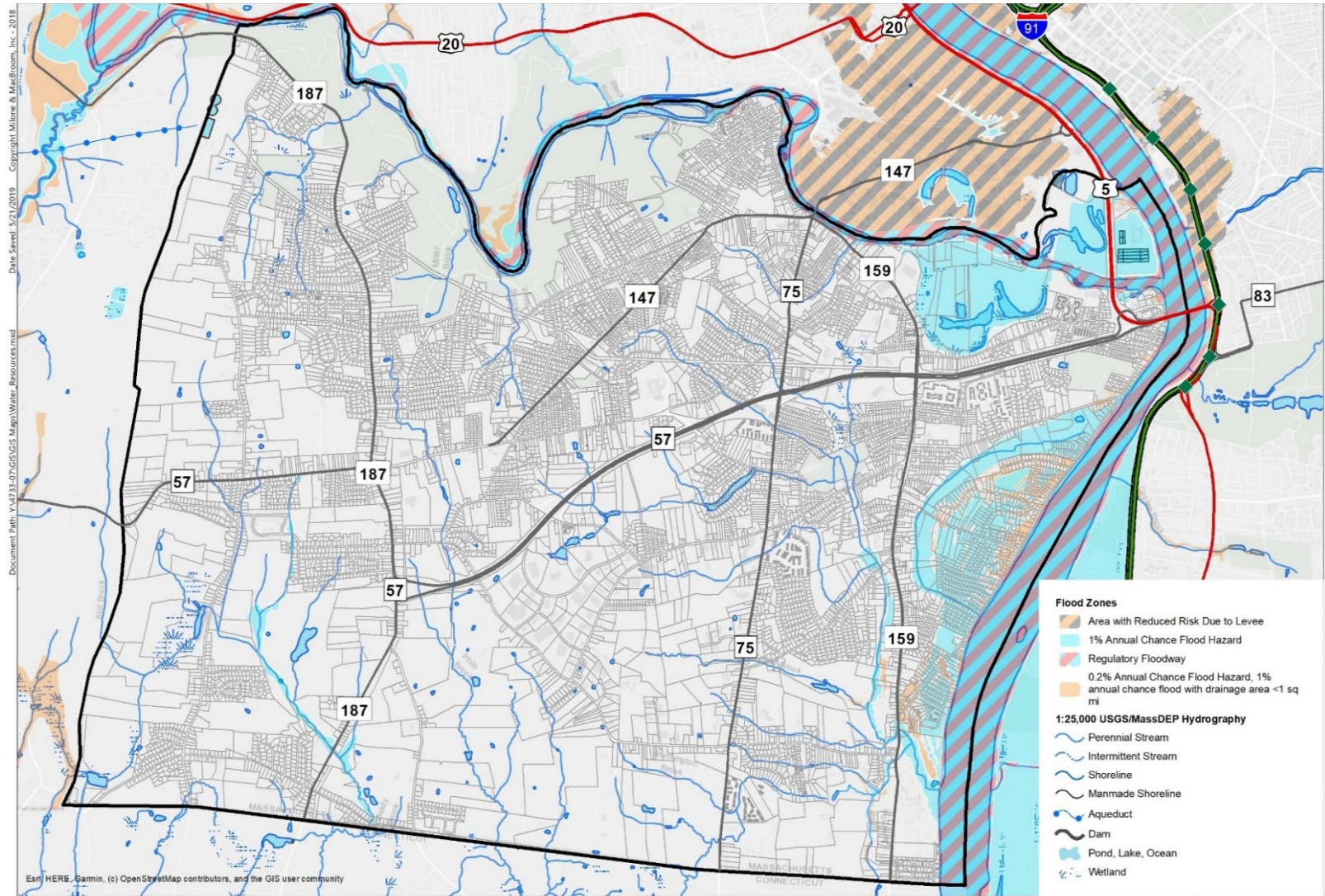
Water Resources

Agawam has over 600 acres of open fresh water, most of which is contained in the Westfield and Connecticut Rivers. The Connecticut River runs along the eastern boundary of Agawam for five miles. The section of the Westfield River that runs along the northern boundary of Agawam is approximately eight miles long and runs from the Westfield town line to its confluence with the Connecticut River at Pyncheon Point. Both water bodies have witnessed dramatic water quality improvement in recent years and are now designated as "Category 2" waters. Under this designation, they are considered to be generally safe for fishing and swimming. However, currents and boat traffic in the Connecticut River and water depths in the Westfield River make swimming impractical in most locations.

The name "Agawam" means wet meadow, due to the abundance of wetlands and floodplains. The majority of the floodplain of the Westfield River is located in Robinson State Park. The floodplain of the Connecticut River is primarily located on the town's easterly border along River Road (Map 7).

Several small ponds, between three acres and 50 acres, are found in town. These are: Silver Lake, Mawaga Pond, Leonard Pond, Robinson Park Pond, Springfield Turnverein Lake, Tuckahoe Pond, Hathaway Pond, and the Lake in the Meadows. Several smaller bodies of surface water exist as well and are primarily used for spray and irrigation and private recreation. Several small streams including Threemile Brook, Tarkill Brook, Still Brook, Philo Brook, Miller Brook, Worthington Brook, and Adams Brook wind through town. Smaller unnamed streams and wetlands exist as well.

Map 7: Water Resources & Flood Zones



Water Resources & Flood Zones
 Open Space & Recreation Plan
 Town of Agawam



Vegetation

Vegetative cover serves a variety of beneficial functions; stabilizing soils, buffering noise and heat, providing habitat and food, purifying the air, improving aesthetics, and providing recreation opportunities.

In 1996, Agawam was awarded an Urban Planning and Forest Grant from the Executive Office of Environmental Management which was used to conduct a survey of street trees located along approximately ten miles of Agawam's primary roads. The survey found that there were approximately thirty different taxonomic groups with the most common species being Norway Maples, Red Maples, and Sugar Maples. The survey found that the overall health of the inventoried trees was good, though there was concern over deadwood and power lines.

During the October snowstorm of 2011, Agawam saw over \$5 million of damage to the town's street trees and other local trees. Though the town does not currently have a public street tree program, extensive street tree planting was initiated during a \$4 million Main Street reconstruction project completed in the fall of 2014 by MassDOT. Approximately 274 new street trees were planted along the Main Street corridor. In addition, in 2012, the Town of Agawam received a \$50,000 to plant new street trees and prune existing trees through a grant from the Executive Office of Energy and Environmental Affairs.

Red maple is the dominant tree species throughout Agawam and comprises most of the basal area in town woodlands (this is particularly true on poorly drained sites). Northern Red Oak, White Pine, Hemlock, Sugar Maple, and White Birch are also major species. Grey Birch, Black Oak, and White Oak are present as well. Agawam forests are evenly aged and, for the most part, are fully stocked with desirable trees.

The Natural Heritage and Endangered Species Program in its 2012 BioMap 2 Report identifies 4,521 acres of core habitat, 868 or 19.2% of those are protected (see Map 8). It also identified five exemplary or priority natural community core habitats in Agawam. Threatened and Endangered plant species include: Narrow-Leaved Spring Beauty, Great Blue Lobelia, Climbing Fumitory, and Smooth Rock-cress. The largest concentration of these species is found along the Connecticut River in what the report calls the largest and highest-quality patch of floodplain forest known in Massachusetts.



Lobelia siphilitica - Great Blue Lobelia, Fritzflohreynolds

Fisheries & Wildlife

As might be expected in a predominantly flat, formerly agricultural environment, many of Agawam's wildlife species are those associated with farmland (i.e. rabbits, pheasants, foxes, hawks, woodchucks, and small rodents). In the suburban sections of town, skunks, squirrels, songbirds, raccoons, and opossums may be found, while deer and other more reclusive species roam Agawam's more remote areas such as Robinson State Park and Provin Mountain. The shores of the Connecticut and Westfield Rivers and the Leonard Pond wetlands area provide a haven for wading birds such as herons and egrets, and other aquatic or semi-aquatic species including ducks, seagulls, and kingfishers.

Though wildlife corridors have not been formally identified, the undeveloped more rural areas have seen the majority of animal sightings. Agawam Meadows, the Cote Property, Robinson State Park, and Provin Mountain have sightings of larger mammals including black bears, coyotes, deer, various members of the cat family and an occasional moose. North Western Feeding Hills and Provin Mountain are popular hunting locations.

The Connecticut and Westfield Rivers are home to a great variety of fish species and are more productive than they have been in many years due to the massive cleanup and restocking efforts of the past decade. Species in evidence include largemouth bass, pickerel, northern pike, sturgeon, and trout. Anadromous fish in the Connecticut River include the recently reintroduced Atlantic salmon and shad. If these species return in sufficient numbers, they may once again become commercially important.

As was stated, the Natural Heritage and Endangered Species Program in its 2012 BioMap 2 Report identifies five Core Habitats in Agawam, in addition they also identified two aquatic core habitats

and one wetland core habitat. Threatened and Endangered vertebrates and invertebrates in Agawam include:

Vertebrates:

- Amphibians
 - Jefferson Salamander
 - Four-toed Salamander
 - Northern Leopard Frog
- Fishes
 - Shortnose Sturgeon
- Reptiles
 - Eastern Box Turtle
 - Eastern Worm Snake
- Birds
 - Grasshopper Sparrow
 - Vesper Sparrow

Invertebrates:

- Mussels
 - Triangle Floater
- Dragonflies
 - Ocellated Darner
 - Spine-crowned Clubtail
 - Rapids Clubtail
 - Skillet Clubtail
 - Stygian Shadowdragon
 - Riffle Snaketail
 - Riverine Clubtail
 - Arrow Clubtail
 - Zebra Clubtail

Protected habitat for a variety of vertebrates and invertebrates are found along the Connecticut River, the forested wetlands and wet meadows of Still and Great Brooks and the Westfield River. By informing communities of their site-specific biodiversity information,

the Natural Heritage & Endangered Species Program is seeking to ensure that the full variety of species and natural communities that comprise our native flora and fauna will persist for generations to come.



Grasshopper Sparrow, Dominic Sherony



Eastern Box Turtle, Jim Lynch, National Park Service

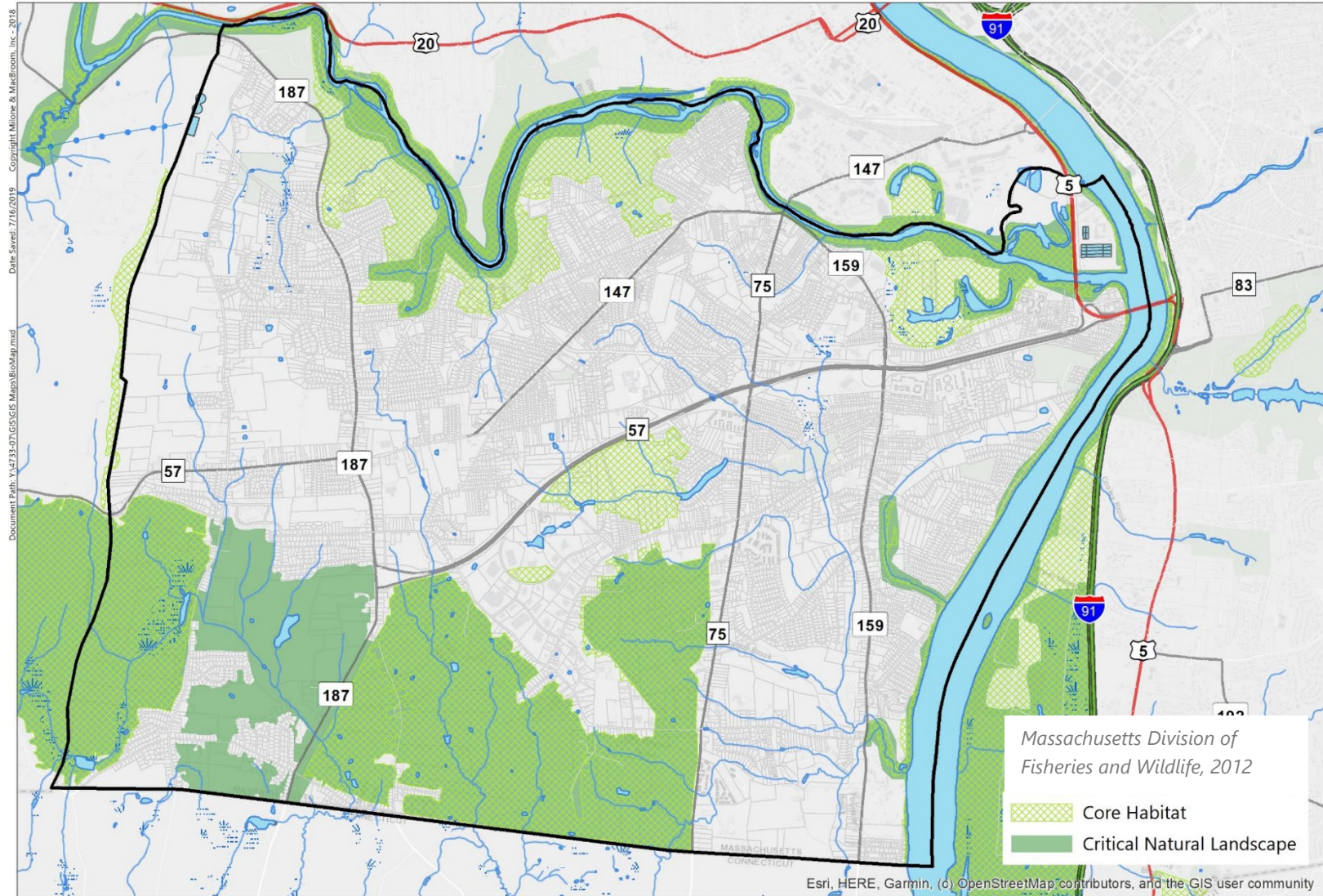


Four-Toed Salamander (Hemidactylium scutatum), Peter Paplanus



Northern Leopard Frog, USFWSmidwest

Map 8: BioMap 2

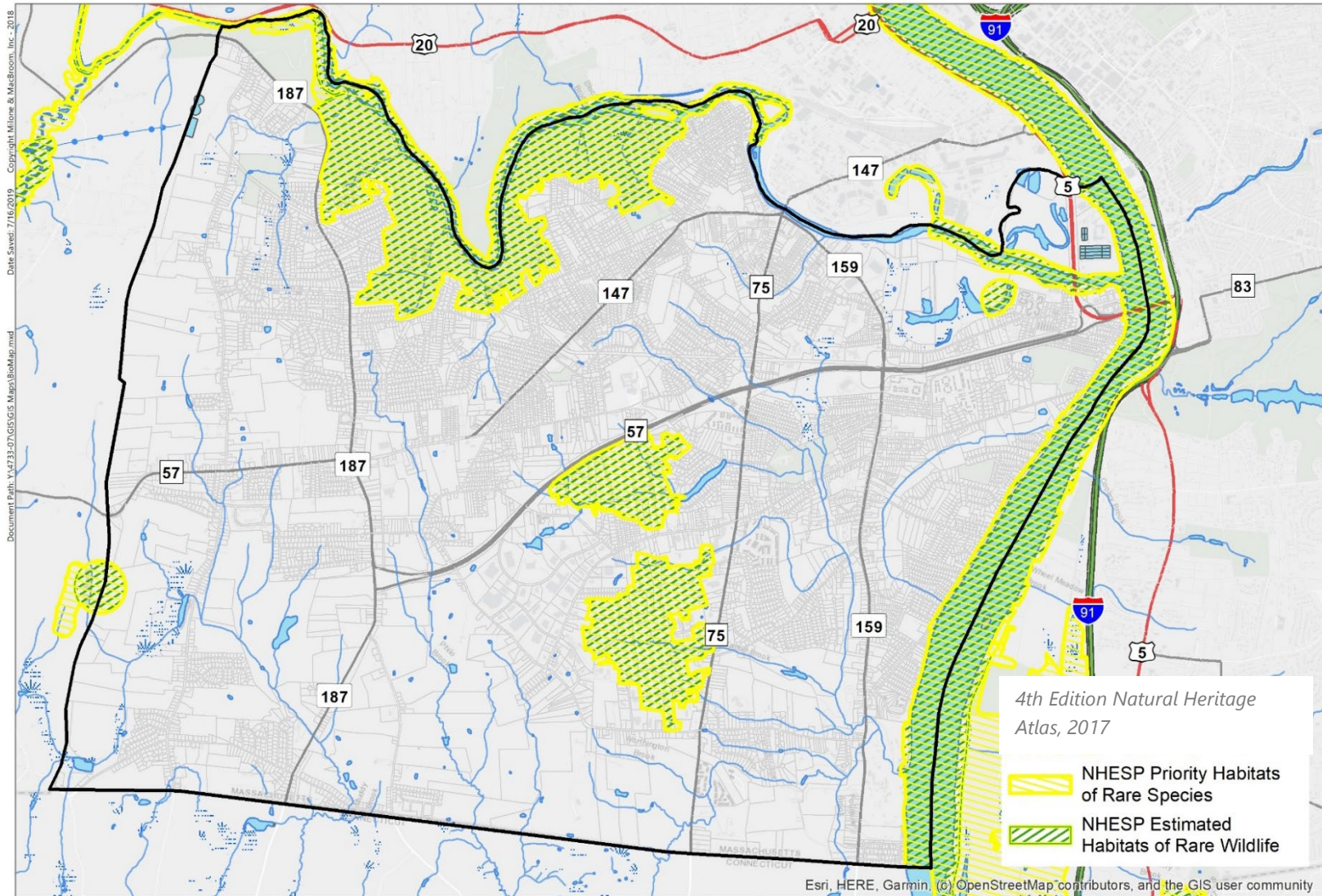


BioMap 2
Open Space & Recreation Plan
Town of Agawam



0 4,000
feet
1 in = 4,097.22 feet

Map 9: Natural Heritage Atlas



Priority & Estimated Habitats
 Open Space & Recreation Plan
 Town of Agawam



0 4000
 Feet
 1 in = 4,097.22 feet

Scenic Resources & Unique Environments

Agawam is fortunate to have many unique features, significant environments, and historical resources (see Map 10). This section inventories a selection of some of the most important places.

1. Provin Mountain

With a summit elevation of 640 feet, Provin Mountain is the highest point of land in Agawam. The hill runs north-south along the entire western edge of town, with its ridge line forming the boundary between Agawam and the neighboring towns of Westfield and Southwick. Its steep eastern slope is heavily forested and offers opportunities for passive recreation. A lookout tower at the summit provides a 360-degree view of the surrounding towns and agricultural lands. It also hosts the New England Trail. The southern portion is classified as Core Habitat and Critical Natural Landscape according to the Natural Heritage and Endangered Species Program.

2. Agawam Meadows

The Meadows is a well-known birding area and provides opportunities for cross-country skiing, hiking, and ice skating. These meadows are part of an extensive floodplain area in the northeast corner of town, near the mouth of the Westfield River. A portion of this area is in agricultural production, while the rest is forested. The agricultural fields are surrounded on three sides by ecologically significant wetland communities, harboring a wide variety of plant and animal life. The land is classified as Core Habitat and Critical Natural Landscape according to the Natural Heritage and Endangered Species Program. A small portion is classified as Priority Habitat of Rare Species and Estimated Habitat of Rare Wildlife.

The largest section of the Meadows is subject to flooding. This flooding is invaluable to the agricultural uses of the Meadows and it contributes to the overall natural diversity in the Meadows. There is

excellent wildlife habitat in the Meadows' wetlands, ponds, and open fields. The Meadows is also a unique "riverscape" in the Town of Agawam on the Westfield River.

3. Connecticut River

Agawam's five-mile-long eastern boundary is defined by New England's largest river. The Connecticut River offers excellent boating and fishing opportunities along its shoreline. The land is classified as Core Habitat and Critical Natural Landscape, as well as Priority Habitat of Rare Species and Estimated Habitat of Rare Wildlife according to the Natural Heritage and Endangered Species Program.

4. Westfield River

This river forms Agawam's eight-mile northern boundary and provides opportunities for water-based recreational activities including fishing, boating, and possibly swimming. The land is



Westfield River, Robinson State Park, John Phelan

classified as Core Habitat and Critical Natural Landscape as well as Priority Habitat of Rare Species and Estimated Habitat of Rare Wildlife according to the Natural Heritage and Endangered Species Program.

5. Greenbelt of May Brook: Robinson State Park – Campanelli Property – Ridgeview Park

This greenbelt includes over 1,000 acres of publicly held land: 811 acres in Robinson State Park owned by the Commonwealth, and the remaining land owned by the Town of Agawam. These natural areas comprise a diverse natural environment of fauna, wildlife and birds, and water bodies, including the Westfield River, May Brook, and Hol Brook, as well as waterfalls, woodlands, marshes, wetlands, and fields. The land is classified as Core Habitat and Critical Natural Landscape, as well as Priority Habitat of Rare Species and Estimated Habitat of Rare Wildlife according to the Natural Heritage and Endangered Species Program. In addition to its value as a natural area, this greenbelt currently provides easy access to passive and active recreational resources.

6. Pynchon Point

This town-owned property lies at the confluence of the Connecticut and Westfield Rivers. This is a low-lying area that is subject to flooding and provides a good view of both rivers. The property is well suited for boat landings and fishing. The land is classified as Core Habitat and Critical Natural Landscape according to the Natural Heritage and Endangered Species Program. However, the natural value of the area may be affected by Bondi's Island with its landfill, trash incinerator and wastewater treatment facility. In the fall of 2006, the Massachusetts Highway Department constructed a parking area on property it owns adjacent to the town-owned property. The new parking lot provides parking for a handicapped accessible paved path down to the beach area of the property funded by a State

Entitlement grant. The path provides access to fishing, boating, picnicking and birdwatching.

7. Cote Property

This property is managed by the Agawam Conservation Commission. This 15-acre parcel contains a $\frac{3}{4}$ -acre pond that was once developed with an asphalt ring around it. The property has slowly reverted to its natural state and currently has a diverse tree canopy and understory providing a home to many wildlife and bird species. Other than a walking trail, there are no recreational facilities on this property. There are several types of wetland communities on the property, a marsh, hardwood swamp, and brook. This is a unique natural town-owned parcel that provides diversity to the town's stock of open spaces.



Pynchon Point, Rusty Clark

8. Land Bordered by Agawam Industrial Park: Garden Street and Route 57 Extension

This area is comprised of a large mature tree stand and aquatic environment. There is a brook running west to east on this property which provides water to the private sporting club, the West Springfield Fish and Game Club. There are several ponds on the brook and the area has a diverse wildlife habitat.

The watershed in this area has been heavily impacted by the encroachment of the Agawam Industrial Park and Route 57 extension. This is one of the few unaltered areas in town. It is not used for active recreational purposes. This area is noted for its function in maintaining water quality in Threemile Brook.

9. Leonard Pond Wetland Complex

This privately owned pond, surrounding marsh, and swamp area are some of the few remaining pristine areas in Agawam. This area provides a flyway stopover and wintering grounds for ducks. This ecosystem has also received formal recognition as a unique resource under federal wetland guidelines. The land is classified as Core Habitat and Critical Natural Landscape according to the Natural Heritage and Endangered Species Program. A small portion is classified as Priority Habitat of Rare Species and Estimated Habitat of Rare Wildlife. There is a view of the pond from South West Street but there is no other access.

10. Westfield River Island – Part of Robinson State Park

The oblong shaped island in the Westfield River near the Strathmore Paper Company contains 10 to 12 acres of land and is part of the Robinson State Park. It is forested with large white pine, ash, and hemlock trees, some as large as two feet in diameter. The land is classified as Core Habitat and Critical Natural Landscape according to the Natural Heritage and Endangered Species Program. The island is suitable for camping for youth organizations. From the Agawam side, access is by foot by way of Ash Hill Avenue down the steep bank to

the river to another fork. In periods of high inundation, access to the island would be difficult; it may be impossible unless a bridge or cable was installed.

11. Covered Reservoir on Provin Mountain

From the Covered Reservoir on Provin Mountain, one can experience excellent views of the surrounding mountains and valleys including a view of Bay State West in Springfield and the City of Westfield. The ledge outcroppings in this area are suitable for geology study. This area also provides access to the New England Trail.

12. Lower Section of Westfield River

The Westfield River, from its confluence with the Connecticut River to the dam in North Agawam, is suitable for limited boating and fishing. A greenbelt should be established along its south banks, where possible, to enhance its value for hiking and shore fishing and to



Westfield River Mouth, Rusty Clark

ensure its access for the general public. The land is classified as Core Habitat and Critical Natural Landscape according to the Natural Heritage and Endangered Species Program.

13. Agricultural Land and the East Side of Provin Mountain

The agricultural land between North West Street and the steep slopes of Provin Mountain should be encouraged to stay in agricultural production. This agricultural land and the east slope of Provin Mountain in addition to providing open space and agricultural products are suitable areas for cross-country skiing, snowmobiling, and limited hunting and provide an excellent variety of cover for upland wildlife.

14. West Springfield Fish & Game Club

The site contains the land, clubhouse, pond, archery range, etc., of the West Springfield Fish and Game Club. The small pond on site is used for warm water fishing. The trail through the oaks on the ridge north of the pond is suitable for hiking around the pond and limited camping in the oaks for youth organizations.

15. Silver Lake

Silver Lake is a private 10-acre lake located off Mill Street on the west branch of Threemile Brook. Numerous homes line the lake shore. The pond is used for swimming, limited boating, fishing, and ice skating. The upstream section of the pond is shallow, with cattails, shrubs, etc.

16. Tuckahoe Turf Farm & Pond

The Town of Agawam purchased the former turf farm in 1993, but little has been done with the property aside from DPW using a small portion for the storage of dirt, mulch, and other materials. There are approximately 292 acres of land between Pine and Southwest Streets in Feeding Hills. Near the center of the site, there is a 10-acre pond formerly used for irrigation that is suitable for limited boating and

fishing. The upper end has a shallow area with shrubs and trees around the edges.

The town has created the Tuckahoe Turf Farm Committee to create a plan for the property which may include trails, a fishing pier, a solar array, nature conservation, cross-country skiing, limited snowmobiling, and limited hunting. The land is classified as Core Habitat according to the Natural Heritage and Endangered Species Program.

17. Mawaga Sporting Club

The Mawaga Sporting Club land with its clubhouse and pavilion is located on Tarkill Brook off Adams Street and contains 87 acres of wooded land. The area includes a 2.5-acre pond which originally supplied waterpower to a grist mill and water for the old Agawam distillery. The club provides trout fishing, hiking, and cookouts for its members. The woodland is used by Girl Scouts as a day camp. The woodlands are suitable for picnicking and as a commercial camping area.

The Division of Fisheries and Game, cooperating with the four states bordering the Connecticut River in restoring salmon to the river, operates a station below the Mawaga Sporting Club for releasing Atlantic salmon into Tarkill Brook and in turn to the Connecticut River.

18. Harts Pond & Access

Harts Pond is a 2.5- to 3-acre irrigation pond located off Barry Street near the Connecticut-Massachusetts boundary in the southwest corner of the town. The pond is surrounded on three sides by a large marsh with cattails and some shrubs. This site is suitable for a nature study area and for preservation and management as wildlife habitat for waterfowl and furbearers. The open fields in this area are reported to have yielded many Native American artifacts. The land is

classified as Core Habitat and Critical Natural Landscape according to the Natural Heritage and Endangered Species Program.

19. Agawam Municipal Golf Course

Agawam Municipal Golf Course is an 18-hole, public, championship golf course owned by the Town of Agawam in the Feeding Hills area. It was first opened in 1929. The 109-acre property features sweeping elevation changes, rolling greens, and incredible views of the Pioneer Valley.

20. School Street/River Road Park

School Street Park is nearly 50 acres between River Road and Corey Street. It contains playing fields and courts, pavilions, a playscape, a disc golf course, as well as a spray park, which was installed in 2015 and is open seasonally. There is also a snack shop, restrooms, and picnic tables. The land is also the site of the School Street Barn (see historic site section).

21. Crestview Country Club

Crestview Country Club has nearly 400 acres of recreational opportunities for its members, including an 18-hole championship golf course, a pool, and tennis courts. Its core uniqueness is the panoramic views of the Pioneer Valley. The land is classified as Core Habitat and Critical Natural Landscape according to the Natural Heritage and Endangered Species Program.

22. Veterans Memorial Cemetery

Opened in 2001 by the Commonwealth, the Veterans Memorial Cemetery serves as a lasting tribute and dignified final resting place for men and women who devoted parts of their lives to serving the United States in the military. With over 61 acres, the site spans Threemile Brook and Tarkill Brook. It is one of three veterans' cemeteries in the Commonwealth.

23. Main Street Historic District

The Agawam Center Historic District encompasses most of the buildings along Elm Street and Main Street radiating out from the intersection in both directions. The district is predominantly residential, although it does contain a number of commercial, industrial, and civic buildings.

The district features a variety of architectural styles, from Georgian and Federal buildings of the early period to mid-20th century ranch housing. The district was listed on the National Register of Historic Places in 2001.

24. Springfield Yacht & Canoe Club

The Springfield Yacht and Canoe Club is a member-owned boating club founded to provide its members with boating access to the Connecticut River. It is one of the few areas in town with river access.

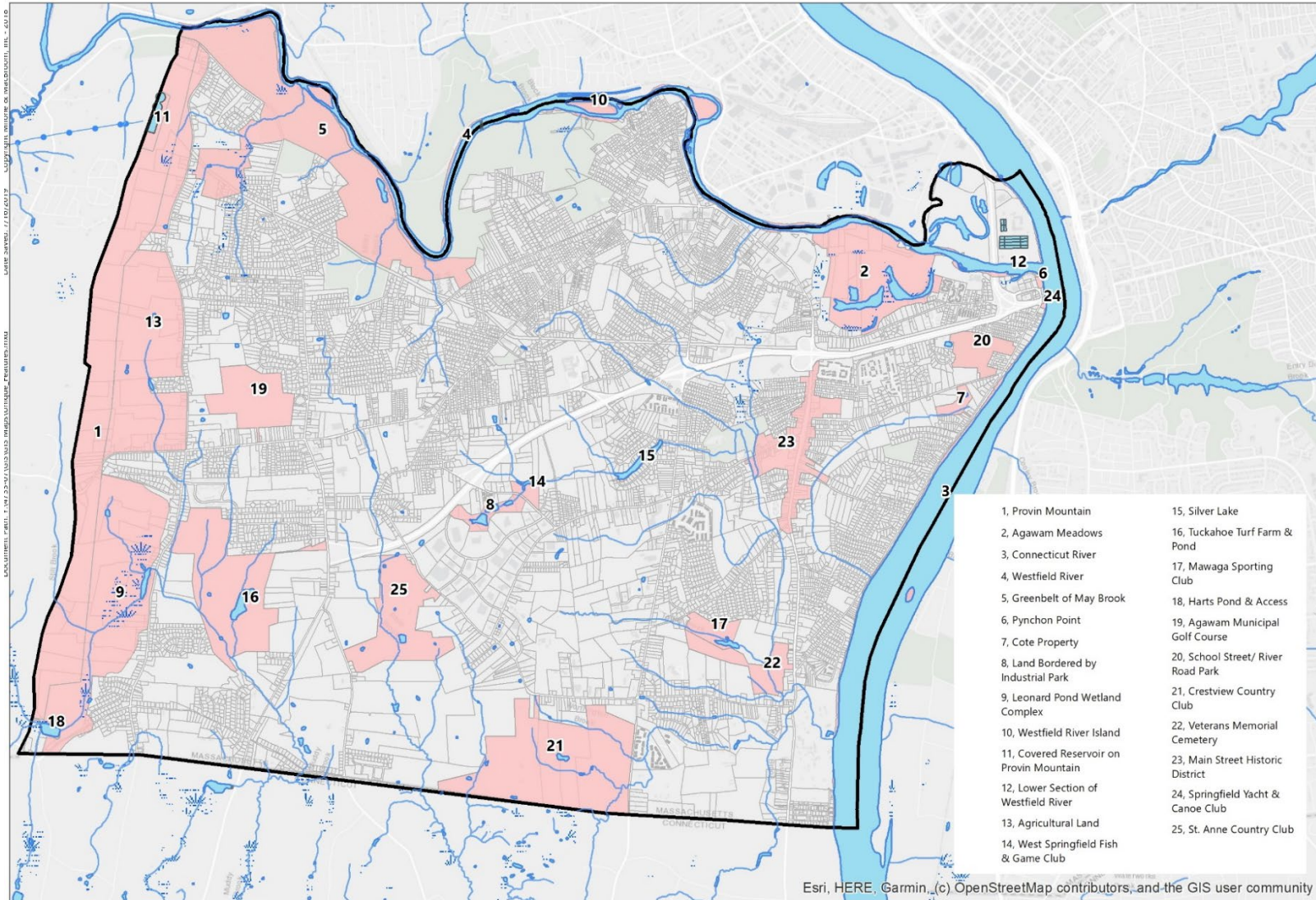
25. St. Anne Country Club

St. Anne Country Club is nearly 168 acres between Shoemaker Lane and South Westfield Street. Among its 18 holes there are stunning views of the surrounding area. The land is classified as Core Habitat and Critical Natural Landscape according to the Natural Heritage and Endangered Species Program.

26. Robinson State Park – East

Together with the other properties mentioned previously, Robinson State Park boasts over 800 acres of parkland. It is well known for its freshwater swimming, hiking, walking, and mountain biking. There is an abundance of wildlife, including rare dragonflies and turtles. This area is classified as Priority Habitat of Rare Species and Estimated Habitat of Rare Wildlife, and Critical Natural Landscape according to the Natural Heritage and Endangered Species Program.

Map 10: Unique Features



Esri, HERE, Garmin, (c) OpenStreetMap contributors, and the GIS user community



Unique Features
Open Space & Recreation Plan
Town of Agawam



0 4,000
feet
1 in = 4,323.49 feet

Historic & Cultural Resources

Today, of the over 9,000 dwellings, several hundred are considered historically significant and reflect Agawam's rich historic past. 518 areas, buildings, burial grounds, objects, and structures in Agawam have been inventoried and are on file with the Massachusetts Historical Commission as historic resources. 470 of the inventoried places are buildings.

The town has the Agawam Center Historic District (National Register) which encompasses the areas from 24 to 196 Elm Street and from 551 to 1008 Main Street. There are only five National Register properties in Agawam; the Captain Charles Leonard House at 663 Main Street; the former Hampden County Training School at 702 South Westfield Street; the Purchase-Ferre House at 1289 Main Street; the School Street Barn at 511 School Street; and the Thomas and Esther Smith House at 551 North West Street.

The Captain Charles Leonard House, built in 1805, is a Federal-style mansion which is currently used as a community house. The Hampden County Training School was built in 1916 in the Neoclassical style. It was originally a boys' reform school before becoming the Western Massachusetts Criminal Justice Training Center in 1978. In 2015-2017 the property was redeveloped into the Gordon H. Mansfield Veterans Community, offering limited equity cooperative housing for homeless veterans. The Purchase-Ferre House, built in 1764, is one of the earliest surviving houses in town. It is in the Georgian style with a central chimney.

The School Street Barn, ca. 1880, stands as the last remaining 19th-century barn in Agawam Center. In use as a working barn for approximately 100 years, the School Street Barn is significant for its uncommon use as a major component of a city jail farm, as distinct from a prison farm. The barn was used for farming activities of the Springfield jail. The barn, a central part of the jail's farm program, was



Thomas and Esther Smith House, John Phelan



Capt. Charles Leonard House, John Phelan

where the farm produce was processed, animals were housed and fed, and equipment was stored.

The Thomas and Esther Smith House is a Georgian-style home located near the base of Provin Mountain in Feeding Hills and is the oldest house in Agawam, built in c. 1757 and still today has never been updated with modern conveniences such as plumbing. The house has been preserved in its near original state through the efforts of the Agawam Historical Association which owns the house and funding from the Agawam Community Preservation Committee and the Historical Association members. It opened as a museum in 2010.

There are other historically eligible properties throughout the town. The Firehouse Museum, a former firehouse from 1918, is located on Elm Street. It was transformed into a museum hosting objects that reflect the heritage and history of Agawam. Agawam also has several homes within the Agawam Center Historic District representing styles of the 18th, 19th, and 20th centuries, including but not limited to Georgian, Federal, Greek Revival, Gothic Revival, Italianate, Queen Anne, Tudor Revival, and Colonial Revival. These historic styles and structures add integrity and beauty to the town and both historic and cultural significance.



A.F.D. No. 3, John Phelan
Now home to the Agawam Historical & Firehouse Museum.



School Street Barn, Henry Kozloski

Environmental Challenges

Environmental Challenges may affect a community's ability to meet open space and recreation goals. This section identifies those challenges which are found in Agawam and indicates whether they impact the town's ability to adequately address the community's needs.

Hazardous Waste Sites

Agawam, like many communities, has an industrial park and small business centers, and is home to many commercial activities that use and consume hazardous materials. For example, dry cleaners use chemical cleaning solvents which pose no threat to the community if they are properly used and disposed. Except for the emission of pollutants to the air, a hazardous material does not present a risk to a community unless it contaminates a drinking water supply or is left or spilled someplace where people may encounter it. Much of Agawam is served by a public water supply, therefore, it faces less of a risk of harm to human health as a result of mishandling of hazardous chemicals. There are no known hazardous waste dumps in the National Priorities List (SUPERFUND).

Four smaller sites have been identified by the Massachusetts Department of Environmental Protection as brownfields; 350 Walnut Street, 378-384 Walnut Street Ext., 270 Main Street, and 358 Corey Street. The town has been working with the owners of these properties to remediate the contamination.

Landfills

While there is one permitted solid waste facility in Agawam, there are no active private landfills. The City of Springfield owns and operates a landfill on Bondi's Island. In conjunction with state and federal regulation of that facility, the Agawam Conservation Commission has limited jurisdiction over the operation and design of that facility as it

lies in the floodplain of the Connecticut River. The southerly side of the landfill is separated from the Westfield River by a flood control structure.

The Springfield landfill only accepts fly and bottom ash from a trash-to-energy facility and processed sludge from the Springfield Wastewater Treatment Facility, both of which are also located on Bondi's Island. The trash incinerator accepts solid waste on a contractual basis from many communities in Hampden, Hampshire, and Franklin Counties, and it is the disposal site of all solid waste formerly going to the Springfield Municipal Landfill. Coupled with state-mandated recycling, the operation of the trash incinerator has extended the life of the municipal landfill. Each of these facilities is permitted and regulated by the Commonwealth of Massachusetts and the United States Environmental Protection Agency.

Other than the many abandoned "farm dumps" scattered throughout Agawam, there are 4 closed or inactive landfills in town. One closed commercial landfill is located at the former Mushy's Recreation Center, now used as a solar farm. As a result of the conclusion reached in the Commonwealth of Massachusetts Solid Waste Master Plan Update (1994) that there is excess landfill capacity throughout the state, and due to the lack of available suitable local sites, it is highly unlikely that there will be any new landfills in Agawam in the foreseeable future.

Erosion

Agawam does not have any erosion-prone areas other than areas under active development and which are incidental to grading and landscaping requirements.

Chronic Flooding

Agawam has a history of flooding year-round. Most flooding results from storm surges in drainage swales, from the runoff of brooks and streams. There is seasonal flooding along the Connecticut River, and

occasionally along the Westfield River. Much of the storm related flooding is caused by poor drainage designs, soil saturation in and around certain developments, development in wetlands and along river floodplains and the floodways of brooks and streams.

Sedimentation

Sedimentation is becoming a more acute problem throughout Agawam as developments encroach upon wetlands, streams and areas subject to flooding. The problem may be made worse by the failure of Agawam and private owners to keep drainage structures clear. The adoption of an ordinance to control drainage has helped to alleviate problems with sedimentation.

Development Impact

As in all areas where rapid suburbanization occurred, Agawam experienced "growing pains". The natural environment has been impacted by development and there has been a significant impact on all water bodies in Agawam. The buildable land remaining is largely associated with many valuable resource areas, including wildlife habitat, wetlands, and watercourses.

Ground & Surface Water Pollution

There has been no perceptible degradation in surface or groundwater quality. Ground and surface water resources in Agawam have been inventoried and are included in the Department of Environmental Protection's Geographic Information Systems (GIS) Maps (quadrangle 40, 46). The GIS maps also contain information on the quality of those water resources and rates them for use and availability as drinking water resources. Other than the permitted solid waste facilities, there is no bar to developing the drinking water resources that have been identified.

Forestry

Forestry activities have had no appreciable impact in Agawam. Forest Cutting Plans overseen by the U.S. Soil Conservation Service are submitted to the Town periodically. The Agawam Conservation Commission reviews these plans and consults with the regional forester when they have concerns. Any impacts are usually temporary. No long-term impacts have been experienced. Today, there are 96.65 acres of land listed under the Chapter 61 Program, consisting of four individual properties.



Pynchon Point, Paul Cooper

Environmental Equity

Environmental Equity ensures that no group or community bears a larger, unfair share of harmful effects from pollution or environmental hazards. Environmental Equity also ensures that no community or population is underserved.

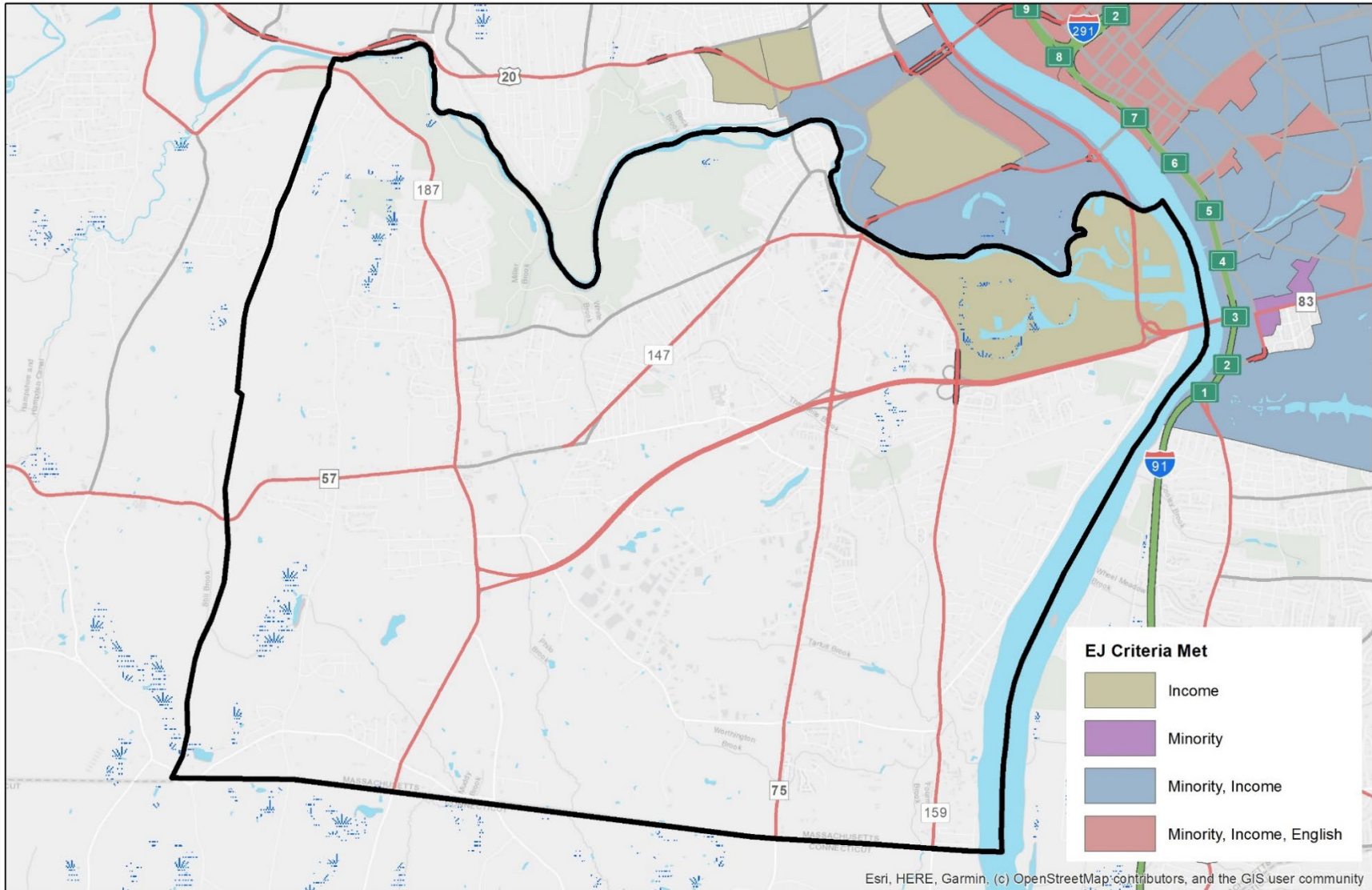
The EPA defines "environmental justice" as the fair treatment and meaningful involvement of all people regardless of race, color, national origin, or income with respect to the development, implementation, and enforcement of environmental laws, regulations, and policies. In the latest assessment, Agawam had one Environmental Justice (EJ) Community in the northeastern section of town (see Map 11). It is classified as an EJ on the basis of income. There are also several EJ communities bordering Agawam on the eastern side. Recreational facilities in Agawam are more abundant in the eastern part of the community where the higher population density is located.

The western part of the community, referred to as Feeding Hills, contains fewer formal recreational facilities such as parks and playgrounds. Feeding Hills does, however, contain large tracts of town-owned land such as Tuckahoe Turf Farm, May Hollow, and Ridgeview Park. The Open Space and Recreation Plan Survey results and the 2018 Parks and Recreation Master Plan reflect the need for additional recreation facilities in Feeding Hills. The Five-Year Action Plan contains several projects which will address this need.

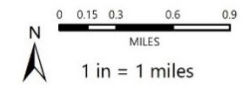


Pynchon Point, Henry Kozloski

Map 11: Environmental Justice Areas



Environmental Justice Areas 2010
 Open Space & Recreation Plan
 Town of Agawam



Farmland

Farmland acreage in Agawam has declined from about 7,500 acres in 1950 to about 3,800 in 1970 to about 2,500 acres in 1982, with an estimated 1,336 acres remaining in 2017.

The current estimate of farmland is based on 65 properties listed under the Chapter 61A Program, and eleven individual farms consisting of approximately 390.5 acres permanently protected under the Agricultural Preservation Restriction Program (APR). However, these numbers may not reflect the total acreage of farmland remaining in town, as Chapter 61, APR and conservation restrictions are all voluntary programs. The amount of land under APR has increased since the 2014 OSRP was adopted. The former Boglisch Tree Farm is under a conservation restriction (see Table 2).

In order to effectively promote the APR and Chapter 61 programs, the town needs to update its inventory of farmland to include properties that may not be in any of these voluntary programs and target its outreach efforts.

Agricultural Preservation Restriction (APR) Properties	
Name	Acres
Kerr Farms	18.89
Johnson Geraldine M	22.69
Stepanik Edward J	31.41
Western Massachusetts Electric Company	31.77
Kerr Barbara H	37.05
Kerr Eva S 2	38.23
Berry David R APR	41.85
Sloane Catherine A APR	81.93
Farnsworth Linda L APR	86.66
Total	390.48
Conservation Restriction Properties	
Boglisch Tree Farm	29.86
Tarkill Brook	35.61
Total	65.47

Table 2: APR & Conservation Restriction Properties

Inventory of Lands of Conservation & Recreation Interest

One of the key components in measuring a community's quality of life is the availability of well-maintained parks, playgrounds, and open space. Such spaces can provide for active and passive recreation and are often focal points for public gatherings and community cultural events.

For the purposes of this plan, open space is land that is undeveloped or left in its natural state. Open space is then divided into two major classifications: recreation and conservation open space.

Parks and playgrounds are recreational, providing places for individuals of all ages to interact and lend a place a sense of community.

Conservation open space or "passive" open space provides individuals with the opportunity to connect with the natural environment and provide peace and serenity. In addition, open spaces serve important environmental functions, such as habitat, flood prevention, and air and water filtration.

Agawam has placed a priority on these important community resources and is fortunate to have many excellent parks and playgrounds, as well as hundreds of acres of undeveloped open space.

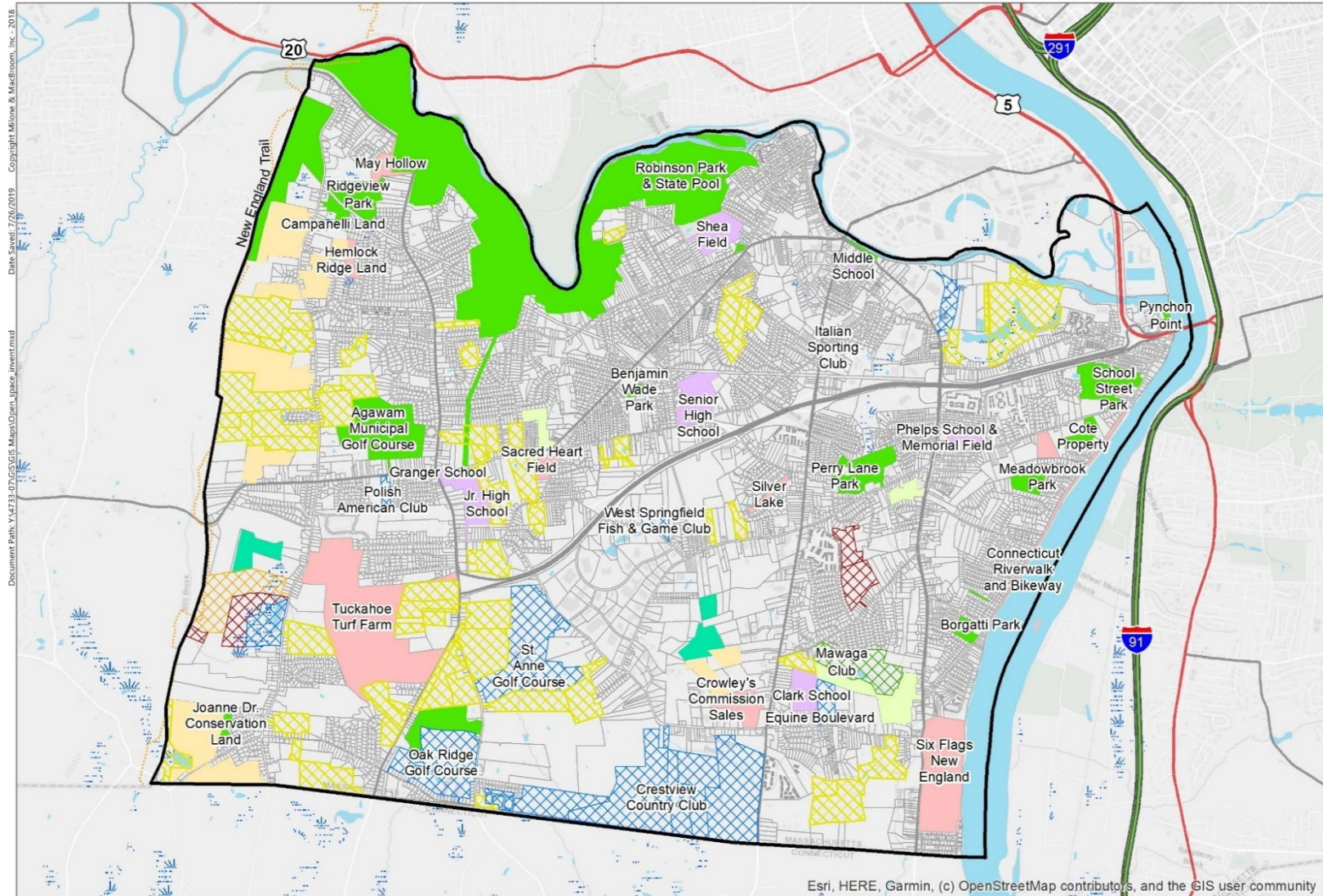
This section of the plan contains an inventory of all publicly and privately owned lands of conservation and recreation interest (see map 12). Critical to the inventory is the identification of those properties which are protected and those not protected.

Lands considered permanently protected in this inventory are those owned or maintained by the Commonwealth of Massachusetts or the Town of Agawam explicitly for the purposes of conservation or recreation. APR lands are also included in this category, as they have a permanent deed restriction which precludes any use of the property that will have a negative impact on its agricultural viability.

Partially protected properties include lands owned or maintained by the Commonwealth of Massachusetts or the Town of Agawam which may contain a component of recreation or open space, these lands are typically schools (playgrounds/ athletic fields) or cemeteries. Partially protected lands also include those in the Chapter 61 tax program, which incentivizes their use as forestland, agricultural land, or recreation land, but does not guarantee their use as such in perpetuity.

Finally, there are those properties that are not formally protected in any way, but the Town of Agawam recognizes their inherent ecological value, or their current or potential use as open space or recreation.

Map 12: Open Space Inventory



Open Space & Protected Lands
Open Space & Recreation Plan
Town of Agawam

Permanently Protected	Partially Protected	61A (Agriculture)	Other Properties
Conservation Area	61 (Forest)	61/61B	None/ Unknown
APR	61/61A	61B (Recreation)	New England Trail
Conservation Restriction		Cemeteries	



Esri, HERE, Garmin, (c) OpenStreetMap contributors, and the GIS user community

Date Saved: 7/26/2019 11:13:18 AM
 Document Path: Y:\4733-07\GIS\GIS Maps\Open_Space_Inventory.mxd
 Copyright Milone & MacBroom, Inc. - 2018

Lands of Interest Ownership, Management & Use Matrix

Name	Owner	Manager	Use	Protection Type	Protection Level
Robinson State Park & State Pool	DCR - Division of State Parks and Recreation	DEM	Active & passive recreation	Conservation Restriction	Permanent
Meadowbrook Park	Town of Agawam	Town of Agawam Parks Department	Active & passive recreation	None	None
Silver Lake		Silver Lake Association	Active Recreation	None	None
The Meadows	Harvard Turf Farms	Harvard Turf Farms	Agricultural	61A	Partial
Western Massachusetts Electric Company APR	Western Massachusetts Electric Company	Western Massachusetts Electric Company	Agricultural	APR	Permanent
Former Boglich Tree Farm (portion of) CR	Western Massachusetts Electric Company	Massachusetts Audubon Society	Agricultural	Conservation Restriction	Permanent
Former Western Massachusetts Criminal Justice Training Center Agricultural Licensing Reserve	Department of Agricultural Resources	Department of Agricultural Resources	Agricultural	None	None
Six Flags New England	Six Flags New England, Inc.	Six Flags New England, Inc.	Amusement Park	None	None
Agawam Junior High School Athletic Fields	Town of Agawam	Town of Agawam School Department	Ball fields	School	None
Agawam Middle School Playground	Town of Agawam	Town of Agawam School Department	Ball fields	School	None
Benjamin Wade Park	Town of Agawam	Town of Agawam Parks and Recreation Department	Ball fields & playground	Conservation Restriction	Permanent
Borgatti Field	Town of Agawam	Town of Agawam Parks and Recreation Department	Ball fields & playground	Conservation Restriction	Permanent

Name	Owner	Manager	Use	Protection Type	Protection Level
Agawam High School Athletic Fields	Town of Agawam	Town of Agawam School Department	Ball fields & track	School	None
Veterans Memorial Cemetery	Massachusetts Department of Veterans' Services	Massachusetts Department of Veterans' Services	Cemetery	Cemetery	Partial
Agawam Center Cemetery	Agawam Center Cemetery Association	Agawam Center Cemetery Association	Cemetery	Historic District	Permanent
Maple Grove Cemetery	Town of Agawam	Town of Agawam	Cemetery	None	Permanent
Old Feeding Hills Cemetery	Town of Agawam	Town of Agawam	Cemetery	None	Permanent
Old North Burying Ground	Town of Agawam	Town of Agawam	Cemetery	None	Permanent
Smith Family Cemetery	Town of Agawam	Town of Agawam	Cemetery	None	Permanent
Springfield Street Cemetery	Feeding Hills Cemetery Association	Feeding Hills Cemetery Association	Cemetery	None	Permanent
Italian Sporting Club	Italian Sporting Club	Italian Sporting Club	Club House	None	None
Sacred Heart Field	Sacred Heart Parish	Sacred Heart Parish	Field Sports	None	None
St. John's Field	St. John's Church	Town of Agawam	Field Sports/ Picnicking/	None	None
West Springfield Fish and Game Club	W.S. Fish & Game Club, Inc.	W.S. Fish & Game Club, Inc.	Fishing and Passive Recreation	61B	Partial
Crestview Country Club	Vista Holding LLC	Vista Holding LLC	Golf Course	61B	Partial
Oak Ridge Golf Course	Oak Ridge Golf Club, Inc.	Oak Ridge Golf Club, Inc.	Golf Course	61B	Partial

Name	Owner	Manager	Use	Protection Type	Protection Level
St. Anne's Golf Course	St. Anne's Country Club Partnership	St. Anne's Country Club Partnership	Golf Course	61B	Partial
Agawam Municipal Golf Course	Town of Agawam	Town of Agawam	Golf Course	None	None
New England Trail	National Park Service	Appalachian Mountain Club	Hiking Trail	National Scenic Tail	Permanent
Crowley's Commission Sales	Crowley	Crowley	Horseback Riding	None/ Unknown	None/ Unknown
Connecticut Riverwalk and Bikeway	State of Massachusetts	Town of Agawam	Multi-use Trail	Protected	Deed restricted
Ridgeview Park	Town of Agawam	Town of Agawam Conservation Commission	Not in use	None	None
River Road Conservation Area - Cote Property	Town of Agawam	Town of Agawam Conservation Commission	Not in use	None	None
Tarkill Brook CR	Western Massachusetts Electric Company	Massachusetts Audubon Society	Open Space	Conservation Restriction	Permanent
Tuckahoe Turf Farm	Town of Agawam	Town of Agawam	Open Space	None	None
School Street Park	Town of Agawam	Town of Agawam Conservation Commission	Park, playground, ball fields	Conservation Restriction	Permanent
Perry Lane Park	Town of Agawam	Parks/Recreation Dept. & DPW	Passive & Active Recreation	Conservation Restriction	Permanent
Pynchon Point Conservation Area	Town of Agawam	Town of Agawam Conservation Commission	Passive Recreation	Conservation Restriction	Permanent
Hemlock Ridge Land	Town of Agawam	Town of Agawam	Passive Recreation	None	None
McGrath Park	Town of Agawam	Town of Agawam	Passive Recreation	None	None

Name	Owner	Manager	Use	Protection Type	Protection Level
Clark School Playground	Town of Agawam	Town of Agawam School Department	Playgrounds & ball fields	School	None
Granger School Playground	Town of Agawam	Town of Agawam School Department	Playgrounds & ball fields	School	None
Phelps School Playground	Town of Agawam	Town of Agawam School Department	Playgrounds & ball fields	School	None
Robinson Park School Playground	Town of Agawam	Town of Agawam School Department	Playgrounds & ball fields	School	Partial
Agawam Outdoor Classroom	Town of Agawam	Town of Agawam School Department	Outdoor Classroom	School	None
Springfield Yacht & Canoe Club	Springfield Y. & C.C.	Springfield Y. & C.C.	Private club/boating	None	None
May Hollow	Town of Agawam	Town of Agawam Department of Public Works	Pump Station & Open Space	None	None
Shea Field	Town of Agawam	Town of Agawam School Department, Parks & Recreation, & Department of Public Works	Skate Park, ball fields, dog park, and playground	None	None
Joanne Drive Conservation Area	Town of Agawam	Town of Agawam Conservation Commission	Unused	Conservation Restriction	Permanent
Springfield Water Works	Town of Agawam	City of Springfield Water Department	Water Treatment	Conservation Restriction	Permanent

Community Vision

Planning Process & Public Participation

The planning process resulting in the 2019 OSRP goals had four major components. First, the Mayor-appointed Open Space and Recreation Plan Advisory Committee represented a diverse cross-section of the Agawam community. Members of committee served as liaison to their neighborhoods including North Agawam and Feeding Hills, and to the boards and commissions they serve including the Historical Commission, Planning Board, Conservation Commission, and CPA. They met over the course of several months to review the previous Plan and to determine where its recommended actions had been achieved, partially achieved or never initiated. All meetings were open to the public.

Second, the 2019 survey collected input from town residents. It was advertised broadly through the local paper, email lists, and social media, and ran from February 2019 through March 2019. The survey collected responses from every neighborhood in Agawam, and provided a foundation for the Town-wide Visioning Session.

The third component, the Visioning Session, provided the public with background on previous plans and the committee's suggestions for this update. It was advertised using the same methods as the survey. The public then had the opportunity to ask questions and provide feedback through "breakout sessions." These exercises focused on the identification of unique and scenic areas, new protected open space, and on the development of the Action Plan. The suggestions and feedback were incorporated into the draft document.

Finally, the public hearing at which the Plan was presented was held on September 12, 2019. The hearing, at a regularly scheduled Conservation Commission meeting, was properly noticed. The

hearing enabled commission members and the public the opportunity to ask questions about the draft plan and suggest improvements. The meeting kicked-off a 30-day public comment period to allow those that could not attend the meeting, the opportunity to provide feedback through the Planning and Community Development Office. The feedback received was reviewed incorporated into the final document.



Visioning Session

Statement of Open Space & Recreation Goals

Agawam is a place of tradition and opportunity. Agawam's agricultural fields, historic homes, and village centers hold reminders of the community's rich past. Provin Mountain, the Connecticut and Westfield Rivers, streams, and wetlands impart a sense of quiet open space that residents find so appealing. In keeping with this tradition and the essential role open space serves, the overall vision for this Plan is to use zoning and acquisition to protect properties of

environmental concern, as well as to maintain and improve existing resources while preserving Agawam's high quality of life and the character of the Town.

Analysis of Needs

Summary of Resource Protection Needs

Agawam contains diverse biomes within a small area. From Provin Mountain to the west, to the Connecticut River to the east, there are forests, farmlands, wetlands, steep slopes, and meandering streams. Due to development pressures the community has experienced, the most easily developed parcels now contain houses, industries, and/or commercial development. The remaining parcels consisting of floodplains, wetland resources, important habitat, and agricultural and forestry resources are receiving the greatest pressure from development.

To balance the need to continue to supply adequate housing and services for Agawam's residents, the town has proactively identified in previous Open Space and Recreation Plans those parcels which are most valuable and most threatened. Purchase of the Agawam Municipal Golf Course, Tuckahoe Turf Farm, and the former Hampden County Prison Farm have succeeded in protecting 450 acres of prime developable land. Agawam is fortunate to have almost its entire northern and eastern borders, those that are formed by the Westfield and Connecticut Rivers, permanently protected. Robinson State Park, consisting of 800 acres of forested uplands and floodplains, is located on the town's northern border. Approximately half of Agawam's easterly boundary is protected by the linear, multi-use trail, known as the Connecticut Riverwalk.

Agawam residents have continuously supported efforts to protect natural resources. In the most recent town-wide survey, discussed in

more detail in the Appendix, 79% of the respondents stated that protection of natural resources should be a high priority. Historically, Agawam elected officials have been hesitant to support the town's acquisition of lands containing wetlands resources or floodplains. Illegal dumping has been a problem for many years and the town has found it difficult to keep presently publicly owned properties free from demolition material and yard waste. However, as floods become more frequent and storms become more intense, the need to protect wetlands and floodplains is more pressing.

Since the enactment of the Rivers' Act in 1992, Agawam rivers have benefitted from the 200' riparian protection. This has provided the Conservation Commission with added enforcement power to protect the community's rivers and associated wetlands. More recently, the Natural Heritage Endangered Species Program has significantly expanded its jurisdiction by updating its Priority Habitats and Estimated Habitats Maps.

Agawam was also one of the first communities in western Massachusetts to adopt the Community Preservation Act (CPA). By using CPA funds, Agawam will be creating an outdoor classroom



Parks & Recreation Needs Assessment and Master Plan

located on 4 acres of land abutting the northeastern side of the Agawam High School. The Town of Agawam adopted an Open Space Residential Development amendment to the Zoning Ordinance in December 2006. Through continued use of this mechanism, additional natural resources will be preserved.

Summary of Community Needs

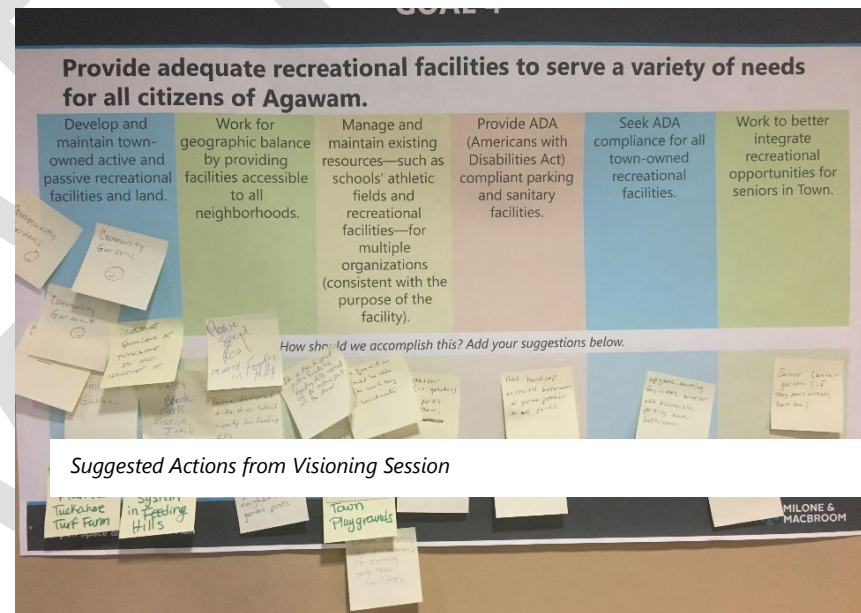
Past Open Space and Recreation Plans determined community needs based solely on feedback from community surveys. This update has the advantage of coming on the heels of Agawam's Parks and Recreation Needs Assessment and Master Plan (PRNAMP), and a recent community survey. The PRNAMP was an in-depth look at the gaps in Agawam's Parks and Recreation facilities. The high priority projects according to the PRNAMP and identified by the steering committee through the survey are listed below:

- Tuckahoe Turf Farm Master Plan
- Valley Brook Park Master Plan
- Feeding Hills Parks & Recreation Feasibility Study
- Parking lot and circulation/access improvements at Shea Field, Borgatti Field North, and Memorial Field
- Investments in existing underutilized parks like Valley Brook and Meadowbrook
- Play area improvements at Borgatti Field, Robinson State Park Fields, and Shea Field Skate Park
- Field Improvements for playability of existing fields at Shea Field Sun Diamond

The PRNAMP also identified projects that expand community resources. The projects from the PRNAMP and identified by the steering committee through the survey are listed below:

- Recreation Center Feasibility Study & Master Plan
- Expanded Parks and Recreation facilities like playing fields in Feeding Hills (SW Agawam, in particular)

- New playgrounds/neighborhood parks, particularly in the Feeding Hills area
- Athletic fields: Multiuse fields, 60' baseball diamond
- Winter recreation facilities: sledding hill, skating rink, and warming hut
- Expanded walking paths, trails, and picnic areas
- Improved on-street pedestrian and bicycle networks
- Multipurpose recreation center
- Community garden space within neighborhood parks



Management Needs & Potential Changes of Use

To address the ever-changing recreational needs of the community, the Parks and Recreation Department is in constant communication with the School Department and the private organizations that utilize town-owned facilities. The Agawam Soccer Association, the Agawam Little League, and the Agawam Youth Football Association utilize the

facilities and contribute financially towards their capital improvements. The town will continue to work hand in hand with the School Department and private organizations to ensure equitable field use and to make facilities improvements.

The PRNAMP also analyzed the funding and operational needs of the Parks and Recreation Department. Its priority list with additions from the steering committee is listed below:

- Capital Budget: Establish (5-year) targets guided by Benchmarks of New England agencies
- Communications
 - Centrally located online information and print materials for parks, athletic facilities, programs, Text alerts, Facebook, and Instagram
- Coordination & collaboration between town (PR Dept./H&G Division/athletic organizations) – Improve process
- Expanded hours of operation and/or public use of facilities (pool, gyms, splash pad, AHS Track)
- Policing and traffic control near parks

Goals & Objectives

The goals and objectives outlined in this Plan are intended to achieve a balance between related conservation and recreation needs. The identified community needs offer many opportunities for collaboration between various organizations, town departments, and boards and committees. The following list of goals and objectives is based on community surveys, input from public meetings, and review by various town staff, boards, and committees.

Goal 1: Develop an open space system that provides benefits throughout the town for all age groups and through all seasons.

Objectives:

- 1) Acquire, preserve, and/or protect parcels, which are in underserved areas, are contiguous with existing habitat, or are important to natural resource conservation or recreation.
- 2) Implement and continue to regularly update the Open Space and Recreation Plan.
- 3) Identify lots that may have ecological or recreational value.

Goal 2: Ensure that the public can access open spaces and recreation areas, consistent with their intended uses.

Objectives:

- 1) Publicize and inform residents about existing open space and recreation areas; where they are, when they are open, and what they offer.
- 2) Work to provide all residents access to open space or recreation facilities within a 10-minute walk from their home.
- 3) Support and encourage infrastructure which provides safe, active, and environmentally friendly access to Parks and Recreation amenities.

Goal 3: Preserve natural resources, habitat systems, wetlands, and farmland.

Objectives:

- 1) Reassess land use regulations to encourage the preservation of open space and natural resources, and the creation of healthy communities
- 2) Promote farmland protection and agricultural uses.
- 3) Encourage donation of land.
- 4) Educate the community about land management techniques, low-impact development, and water resource protection.
- 5) Increase protections for ecologically sensitive areas.

Goal 4: Provide adequate recreational facilities to serve a variety of needs for all citizens of Agawam.

Objectives:

- 1) Develop, manage, and maintain town-owned active- and passive-recreational facilities and land, striving for geographic balance.
- 2) Seek ADA compliance for all recreational facilities.
- 3) Work to better integrate recreational opportunities for seniors in town.

Five-Year Action Plan

The Action Plan below describes community objectives with associated projects and strategies developed through community input. Many of the actions listed reflect updated priorities and recommendations in development over many years

Responsible Party

The Action Plan tries to identify the responsible party(ies) that would be critical to implementing and completing each task—town staff, boards and committees, volunteers, and local organizations. The Town of Agawam is fortunate to have a range of competent departments and staff who frequently collaborate on projects as well as work independently on specific tasks. In addition to town staff, there are approximately 20 active boards and committees comprised of citizen volunteers who contribute to the success of projects undertaken by the Town of Agawam.

Timeline

The Action Plan categorizes action steps by the estimated timeframe needed to implement each action. Many of the recommended actions and strategies are complex tasks that are best accomplished in phases and with assistance from various departments and boards and committees. The timeframe in the Action Plan is labeled as follows:

- O – Ongoing
- S - Short term: 1-3 years
- M - Intermediate: 3-5 years
- L - Long term: 5-7 years

Funding

Funding is critical to the success of many of the objectives and actions. The Town of Agawam recognizes the importance and causal relationship between successful projects and successful funding, and has a history of securing grants for land conservation and recreation, as well as making use of Community Preservation Act (CPA).

Implementing the actions and objectives within the Action Plan will likely require the combination of many funding sources—general town operating and capital funds, Community Preservation Act funds, state and federal grants, volunteer efforts, private donations, and financial strategies yet to be explored. Listed below are some funding sources that may be employing in the implementation of this plan.

- APR Funding: prime farmland and active agricultural operations
- LAND Grants: general open space, watershed protection and habitat preservation, trail corridors
- PARC Grants: active recreation lands—acquisitions and improvements
- LWCF: both active and passive recreation lands, open space, etc.
- CPA: the Town of Agawam generates funds annually with this program to help with conservation and recreation
- Donations of money and land
- Funding from private land trusts
- Cooperative projects with DCR, DEM, MassWildlife
- Cooperative projects with U.S. Fish and Wildlife Service
- Forest Legacy funding for intact forest lands

Goal 1

1	Develop an open space system that provides benefits throughout the town for all age groups and through all seasons.			
1.1	Acquire, preserve and/or protect parcels, which are in underserved areas, are contiguous with existing habitat, or are important to natural resource conservation or recreation.			
	Actions	Responsible Party	Funding Opportunities	Timeline
1.1.1	Create a permanent Open Space Committee to oversee acquisition and management of existing and future resources.	CPA, Conservation Commission, Planning Dept.	Town Budget, CPA	S
1.1.2	Create an up-to-date comprehensive plan that involves intensive public outreach in the vein of the Town's 1993 "Coming Together for Consensus" report.	Planning Dept.	Town Budget, Grants, PVPC	M
1.1.3	Identify tax title properties contiguous with existing open space and consider taking possession.	Mayor & Town Council, Planning Dept., Assessor, Future Open Space Committee	Town Budget	O
1.1.4	Explore the potential to create a trail connecting Robinson Park, the Junior High School, and Tuckahoe Turf Farm.	DPW, Parks & Rec., School Dept., Planning Dept.	Town Budget	L
1.2	Implement and continue to regularly update the Open Space and Recreation Plan.			
	Actions	Responsible Party	Funding Opportunities	Timeline
1.2.1	Review implementation efforts with Town Departments, Boards, and Commissions at least annually.	Planning Dept.	Town Budget	O
1.2.2	Revise the community survey for 2024 OSRP update and seek greater community engagement.	Planning Dept.	CPA	O

1.3	Identify lots that may have ecological or recreational value.			
	Actions	Responsible Party	Funding Opportunities	Timeline
1.3.1	Work with Assessor to identify vacant and sub-prime building lots. Analyze them relative to natural resources and recreational assets mapping to identify key gaps.	Planning Dept., Assessor	Town Budget	S
1.3.2	Seek input from the community on strategic lots through future outreach efforts.	Planning Dept.	Town Budget	L

DRAFT

Goal 2

2	Ensure that the public can access open spaces and recreation areas, consistent with their intended uses.			
2.1	Publicize and inform residents about existing open space and recreation areas; where they are, when they are open, and what they offer.			
	Actions	Responsible Party	Funding Opportunities	Timeline
2.1.1	Create a communication strategy of digital and print informational materials to advertise local recreation and open space resources, and promote regional/national resources, such as the New England Trail.	Parks & Rec.	CPA	S
2.1.2	Create "page(s)" on Channel 15 for public recreation and open space amenities.	Parks & Rec.	CPA	S
2.1.3	Assign a person to keep the Parks & Recreation website updated with current information.	Parks & Rec., IT	CPA	S
2.1.4	Consider expanding public hours for the Agawam High School Track.	School Dept., Parks & Rec.	Town Budget	S
2.2	Work to provide all residents access to open space or recreation facilities within a 5-minute drive from their home.			
	Actions	Responsible Party	Funding Opportunities	Timeline
2.2.1	Encourage the inclusion of some recreation infrastructure as a part of the Tuckahoe Master Plan.	Tuckahoe Master Plan Committee	Town Budget	O
	See 1.3.1			

2.3	Support and encourage infrastructure which provides safe, active, and environmentally friendly access to Parks and Recreation amenities.			
	Actions	Responsible Party	Funding Opportunities	Timeline
2.3.1	Study the safety and availability of bike and pedestrian infrastructure conditions throughout town.	Engineering, DPW	Town Budget, Commonwealth, Federal	L
2.3.2	Identify funding sources for sidewalk construction.	Engineering, DPW	Town Budget, Commonwealth, Federal	O
2.3.3	Create designs for sidewalks on Adams Street and busy cut-throughs like Barry Street.	Engineering, DPW	Town Budget, Commonwealth, Federal	L
2.3.4	Encourage that a Complete Streets policy be included in the subdivision regulations.	Planning Dept., DPW, Engineering	Town	O/S
2.3.5	Encourage town planning for bike lanes on all major roads.	Planning Dept., DPW, Engineering	Town	O/S
2.3.6	Encourage the use of utility easements for paths/bike lanes as appropriate.	DPW	Town Budget, Commonwealth, Federal	O
2.3.7	Implement complete streets policy in public and private projects.	Planning Dept., DPW, Engineer	Town	O

Goal 3

3 Preserve natural resources, habitat systems, wetlands, and farmland.				
3.1 Reassess land use regulations to encourage the preservation of open space and natural resources, and the creation of healthy communities.				
	Actions	Responsible Party	Funding Opportunities	Timeline
3.1.1	Send a recommendation to Town Council to engage in a comprehensive zoning revision in order to include low-impact development principals and sustainable development practices.	Zoning Review Committee, Planning Dept.	Town Budget	S/O
3.2.1	Support town's and Conservation Commission's efforts to pass a municipal wetlands ordinance.	Conservation Commission, Planning Dept., Mayor & Town Council	Town Budget	O
3.2 Promote farmland protection and agricultural uses.				
	Actions	Responsible Party	Funding Opportunities	Timeline
3.2.1	Appoint members to the Agricultural Commission.	Mayor & Town Council	Town Budget	S
3.2.2	Create an inventory of active farmland using information from the Assessor.	Planning Dept., Assessor	Town Budget	S
3.2.3	Reach out to all current farm owners and operators to promote APRs and discuss legacy planning.	Planning Dept., Future Agricultural Commission	Town Budget	S/O
3.2.4	Purchase farmland or work with a nonprofit to do so and encourage active farming uses in perpetuity.	Mayor, Planning Dept., American Farmland Trust	APR, MA Department of Agricultural Resources	O/L

3.3 Encourage donation of land.				
	Actions	Responsible Party	Funding Opportunities	Timeline
3.3.1	Educate tax title property owners about the option to donate land.	Assessor	Town Budget	O
3.3.2	Regularly educate and update Town Council on open space objectives and make recommendations regarding potential land donations.	Conservation Commission	Town Budget	O
3.3.3	Foster the creation of a non-profit local land trust that can hold and acquire conservation easements and open space lands in order to have a nimble partner in open space protection efforts.			
3.4 Educate the community about land management techniques, low impact development, and water resource protection.				
	Actions	Responsible Party	Funding Opportunities	Timeline
3.4.1	Create an education campaign regarding land management techniques, low-impact development, and water resource protection through the collaboration of multiple town boards and commissions and nonprofit partners.	Mayor, Town Depts., Nonprofits	Town Budget, Commonwealth, Non-profit	M/O
3.5 Increase protections for ecologically sensitive areas.				
	Actions	Responsible Party	Funding Opportunities	Timeline
3.5.1	Pursue designation of ecologically sensitive land as a sanctuary for wildlife.	Future Open Space Commission	Town Budget, Commonwealth, Federal	L/O

Goal 4

4 Provide adequate recreational facilities to serve a variety of needs for all citizens of Agawam.				
4.1 Develop, manage, and maintain town-owned active and passive recreational facilities and land, striving for geographic balance.				
	Actions	Responsible Party	Funding Opportunities	Timeline
4.1.1	Implement recommendations from the 2018 Parks & Recreation Master Plan.	Parks & Rec., DPW	Grants, Town Budget	O
4.1.2	Explore potential to build community gardens in interested neighborhoods.	Community groups, Planning Dept.	Town Budget	O
4.1.3	Create a Trail System Master Plan for Valleybrook Park.	Parks & Rec., DPW, Planning Dept.	Town Budget	M
4.1.4	Renovate Meadowbrook Park and update equipment.	Parks & Rec., DPW	Town Budget	M
4.1.5	Create river access for small motorized boats.	Parks & Rec., DPW	Town Budget	M
4.1.6	Budget to ensure maintenance of existing parks and new facilities.	Parks & Rec., DPW, Mayor	Town Budget	O
4.1.7	Collaborate with Town Council and Mayor to identify other potential municipal funding sources to address open space and recreation needs.	Mayor, Town Council, Conservation Commission, Future Open Space Commission	Town Budget	O

4.2 Seek ADA compliance for all recreational facilities				
	Actions	Responsible Party	Funding Opportunities	Timeline
4.2.1	Follow the recommendations of the ADA self-evaluation to bring all town-owned facilities into compliance.	DPW	Town Budget, Commonwealth, Federal	L
4.2.2	Require universal design to be included in all future public or private recreation facilities.	DPW, Planning Dept.	Town Budget	S
4.3 Work to better integrate recreational opportunities for seniors in Town				
	Actions	Responsible Party	Funding Opportunities	Timeline
4.3.1	Begin a discussion with stakeholders to address the recreational needs of seniors.	Parks & Rec., Council on Aging, Senior Center	Town Budget	S/O

ADA Self Evaluation

The Town of Agawam conducted an American with Disabilities Act (ADA) self-evaluation in 2015. The report is available on the town's [website](#). The town continues to pursue its implementation for Open Space and Recreation facilities as well as for its website. As facilities are renovated and built, Agawam will continue to implement the recommendations of this report to improve accessibility for all Agawam residents.



Town of Agawam

ADA Self-Evaluation
Executive Summary;
Evaluation of Non-discriminatory
Policies and Practices in Programs,
Services, and Activities; and
Evaluation of Facilities

July 6, 2015



Institute for
Human
Centered
Design

200 Portland Street, First Floor
Boston, MA 02114
617 695 1225 voice/tty
www.IHCDesign.org

Public Comments

DRAFT

References

- Agawam Community Preservation Committee, Town of Agawam Community Preservation Plan, January 2006.
- American Farmland Trust, The Cost of Community Services in Agawam, Massachusetts, July 1991.
- Baystate Environmental Consultants, Inc., Agawam Farmlands - A Plan for Conservation, February 1983.
- Brown, Donald, & Donald, Planning services, Inc., Town of Agawam, Massachusetts, Master Plan, 1976.
- Commonwealth of Massachusetts, Executive Office of Environmental Affairs, Living Waters - Guiding the Protection of Freshwater Biodiversity in Massachusetts, 2003.
- Commonwealth of Massachusetts, Natural Heritage & Endangered Species Program, Regulatory Maps: Priority & Estimated Habitats, August 2017.
- Commonwealth of Massachusetts, Natural Heritage & Endangered Species Program, BioMap 2: Conserving the Biodiversity of Massachusetts in a Changing World, 2012.
- Conway School of Landscape Design, Tuckahoe Recreation Area, April 1994.
- Interchange, Town of Agawam Master Plan Update, July 1984.
- Institute for Human Centered Design, ADA Self-Evaluation, June 2015.
- Land Use Inc., A Working Statement of Goals and Objectives to Guide Agawam into the Future, October 1993.
- McGregor & Associates, P.C., Town of Agawam Community Development Plan, July 2004.
- Pioneer Valley Planning Commission, Connecticut River 2020 Strategy, 1993.
- Pioneer Valley Planning Commission, Connecticut River 2020 Strategy, Part Two: Action Strategy for Riverfront Revitalization, 1995.
- Pioneer Valley Planning Commission, Westfield River Five Year Watershed Action Plan, June 2006.
- Pioneer Valley Planning Commission, Agawam Community Profile, 2014.
- Town of Agawam, 2014 Agawam Open Space and Recreation Plan.
- Town of Agawam, Housing Production Plan FY18-22.

Appendix

Chapter 61 Lands

Name	Owner's Address	Chpt.	Acres
Lane, John S. & Son, Inc.	PO BOX 125--730 E. Mountain Rd.	61	41.54
Lane, John S. & Son, Inc.	PO BOX 125--730 E. Mountain Rd.	61	5.55
Hall Ann T Tr, Ann T Hall Revoc Inden Trust	293 Merriweather Dr	61	18.92
Tate Hall Ann Tr, John C Tate Nominee Tr	293 Merriweather Dr	61	30.63
		Total 61	96.64
Mawaga Sporting Club	P.O. Box 57	61 61B	64.51
		Total 61&61B	64.51
Lane, John S. & Son, Inc.	PO BOX 125--730 E. Mountain Rd.	61/ 61A	83.20
		Total 61/61A	83.20
Cecchi, Barbara	102 North Westfield St.	61A	16.75
Fini Albert	103 Mapleshade Ave.	61A	5.61
Stepanik, Karrie	1049 Shoemaker Ln	61A	26.04
DePalma, Ralph	1070 Halladay Av W	61A	39.29
Cecchi and Sons Inc.	1109 Springfield St.	61A	10.46
Cecchi and Sons Inc.	1109 Springfield St.	61A	0.77
Cecchi, Robert J. Trs. of / Cecchi, Erminio Trust	1109 Springfield St.	61A	0.43
Cecchi, Robert J. Trste / Cecchi, Erminio Trust	1109 Springfield St.	61A	26.38
Vincent Land Holdings LLC	1193 Sheldon St PO Box 170	61A	41.88
Vincent Land Holdings LLC	1193 Sheldon St PO Box 170	61A	22.10
DeCaro, Frank & Joseph P.	1236 Springfield St.	61A	9.28
Cincotta, Laura	1246 Springfield St	61A	5.55
Cincotta, Felix	1252 Springfield St	61A	0.34
Grimaldi, Carmino F., James A., & Frank A.	1279 Springfield St.	61A	27.48
Hastings, Jeffrey A	131 North West St.	61A	32.35
Hastings, Jeffrey A	131 North West St.	61A	9.13
Morris Farm Trust, Morris Steven H L/T TR, Morris Raymond T L/T TR	140 Rowley St.	61A	21.65
Morris Farm Trust, Morris Steven H L/T TR, Morris Raymond T L/T TR	140 Rowley St.	61A	18.49
Morris Farm Trust, Morris Steven H L/T TR, Morris Raymond T L/T TR	140 Rowley St.	61A	8.07
Markowski, Edward Sr. / Markowski, Dorothy, Edward Jr., John	216 Babbs Rd.	61A	33.25
Markowski, Edward Sr. / Markowski, Dorothy, Edward, Jr., John	216 Babbs Rd.	61A	10.87

Markowski, Edward Sr. / Markowski, Dorothy, Edward, Jr., John	216 Babbs Rd.	61A	48.80
Morris Joseph and Morris Gilbert	22 Plantation Dr	61A	7.67
Turnbull, Gary & Donna	252 North West St.	61A	19.28
Turnbull, Gary & Donna	252 North West St.	61A	3.65
Turnbull, Gary & Donna	252 North West St.	61A	30.44
Christopher, Thomas J. & Jayne C.	269 Poplar St.	61A	8.73
Christopher, Thomas J. & Jayne C.	269 Poplar St.	61A	2.23
Kosinski, Michael G. + Kosinski, Gene M.	336 Russellville Rd	61A	67.26
Malone Lauren - - Malone, Ernest A. Jr.	338 Silver St.	61A	8.86
Malone Lauren - - Malone, Ernest A. Jr.	338 Silver St.	61A	5.18
Liquori, Geraldine	340 Pine St.	61A	23.89
Liquori, Geraldine	340 Pine St.	61A	3.50
Liquori, Geraldine	340 Pine St.	61A	10.29
Verteramo, Linda R	35 Jennie Cr 786-5712 Linda's number 789-0432 (TONY MECCIA LANDSCAPING)	61A	10.66
DePalma, Ralph & Tirone Giuseppe	36 Canterbury Ln.	61A	54.93
Tirone, Vincenzo P	36 Tanglewood Lane	61A	11.91
Waniewski, Henry P., Michael, Geraldine Mary, Labosco Carol Ann W	397 So. Westfield St.	61A	33.42
Cecchi, Peter & Alyson	398 North Westfield ST	61A	5.58
Schmaelzle, Mary R. L/T, Paul G, Karl J	400 So. Westfield St.	61A	27.66
Schmaelzle, Mary R. L/T, Paul G, Karl J	400 So. Westfield St.	61A	19.36
Schmaelzle Paul G.	400 South Westfield St.	61A	2.89
Schmaelzle, Paul	400 South Westfield St.	61A	8.22
Schmaelzle, Paul G.	400 South Westfield St.	61A	8.07
Spineti, Carmela, & John P., Lazarus, Linda J	43 Twin Oaks Rd.	61A	7.83
Spineti, Carmela, & John P., Lazarus, Linda J	43 Twin Oaks Rd.	61A	2.81
Spineti, John P & Lazarus, Linda J.	43 Twin Oaks Rd.	61A	0.97
Spineti, John P. & Lazarus, Linda J.	43 Twin Oaks Rd.	61A	0.96
Brown Gary, Brown Scott L	481 North West St.	61A	10.38
Brown Gary, Brown Scott L	481 North West St.	61A	75.14
The Fearn Family Realty Trust (MURIEL FEARN)	539 SHOEMAKER LN	61A	34.48
Thompson, Dennis J. & Koster, Russell	55 Orchard St.	61A	18.54
Czerpak, Joseph A.	636 So. Westfield St.	61A	30.30

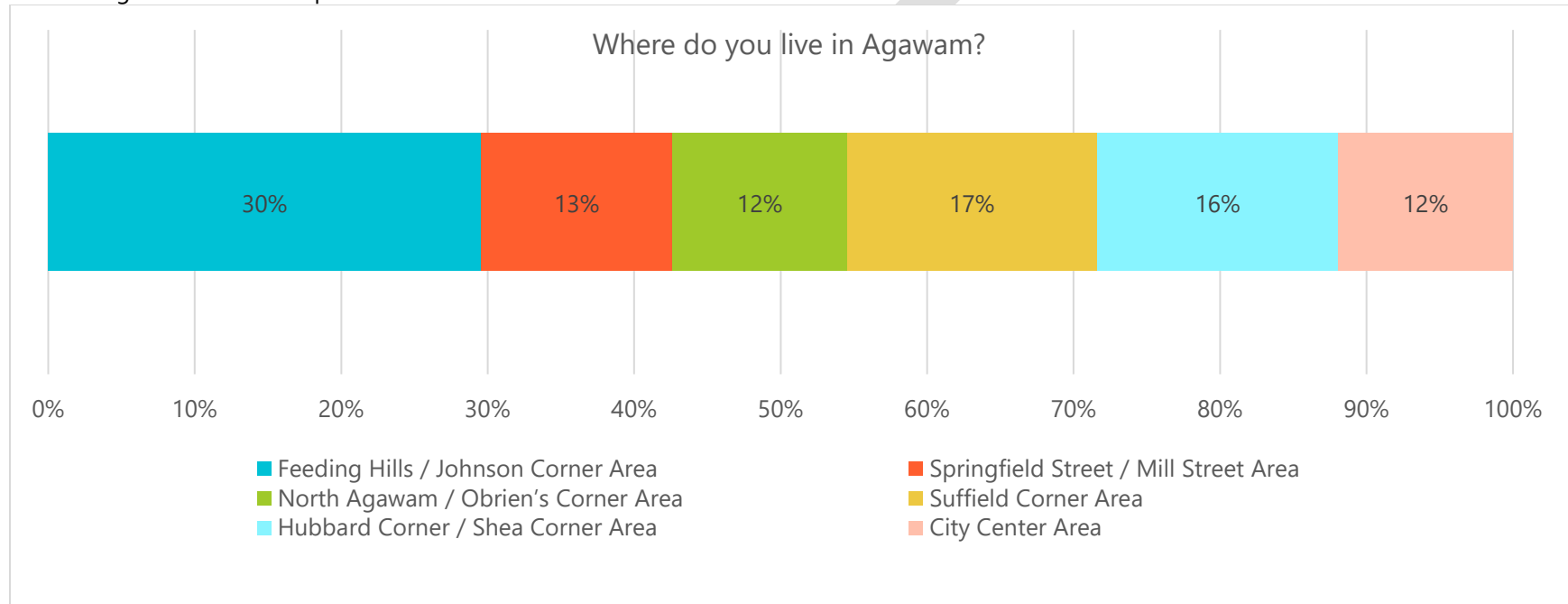
Czerpak, Joseph A. & Mary Ann	636 So. Westfield St.	61A	12.15
Czerpak, Joseph A. & Mary Ann	636 So. Westfield St.	61A	19.85
Kosinski, Michael G.	639 Shaker Rd	61A	23.31
O'Krongly, John & Marian	847 North St	61A	8.78
Bruno, Severina	953 South Westfield St.	61A	4.65
Harvard Turf Farm Inc.	99 UNIVERSITY RD, PO BOX 190, CANTON, MA 02021-0190	61A	120.95
Harvard Turf Farm Inc.	99 UNIVERSITY RD, PO BOX 190, CANTON, MA 02021-0190	61A	4.90
Faits, Douglas (now owned by Son Douglas)	PO Box 164, Feeding Hills, MA 01030	61A	34.30
Vincent Land Holdings LLC	PO BOX 170, 1193 SHELDON ST	61A	5.07
Vincent Land Holdings LLC	PO BOX 170, 1193 SHELDON ST	61A	39.54
Unknown	Unknown	61A	9.53
		Total 61A	1,253.09
Polish American Club	139 Southwick St	61B	7.40
Vista Holding LLC	281 Shoemaker Ln	61B	3.02
Vista Holding LLC	281 Shoemaker Ln	61B	132.10
Vista Holding LLC	281 Shoemaker Ln	61B	37.56
Vista Holding LLC	281 Shoemaker Ln	61B	58.69
Vista Holding LLC	281 Shoemaker Ln	61B	137.97
Vista Holding LLC	281 Shoemaker Ln	61B	61.64
Thompson, Holly	286 South St (SEND TO PO BOX 354 SUFFIELD, CT 06078)	61B	18.32
W.S. Fish & Game Club, Inc.	329 Garden St. PO Box 25	61B	13.01
Mushy's Golf Center LLC	369 Main St	61B	21.20
St. Anne's Country Club Partnership	781 Shoemaker Ln.	61B	163.63
Oak Ridge Golf Club, Inc.	P.O. Box 242	61B	112.91
Unknown	Unknown	61B	38.08
		Total 61B	805.53
		All Chapter 61 Total	2,302.97

Community Survey Results

The community survey had 176 respondents.

Question 1

All the neighborhoods are represented.



Question 2

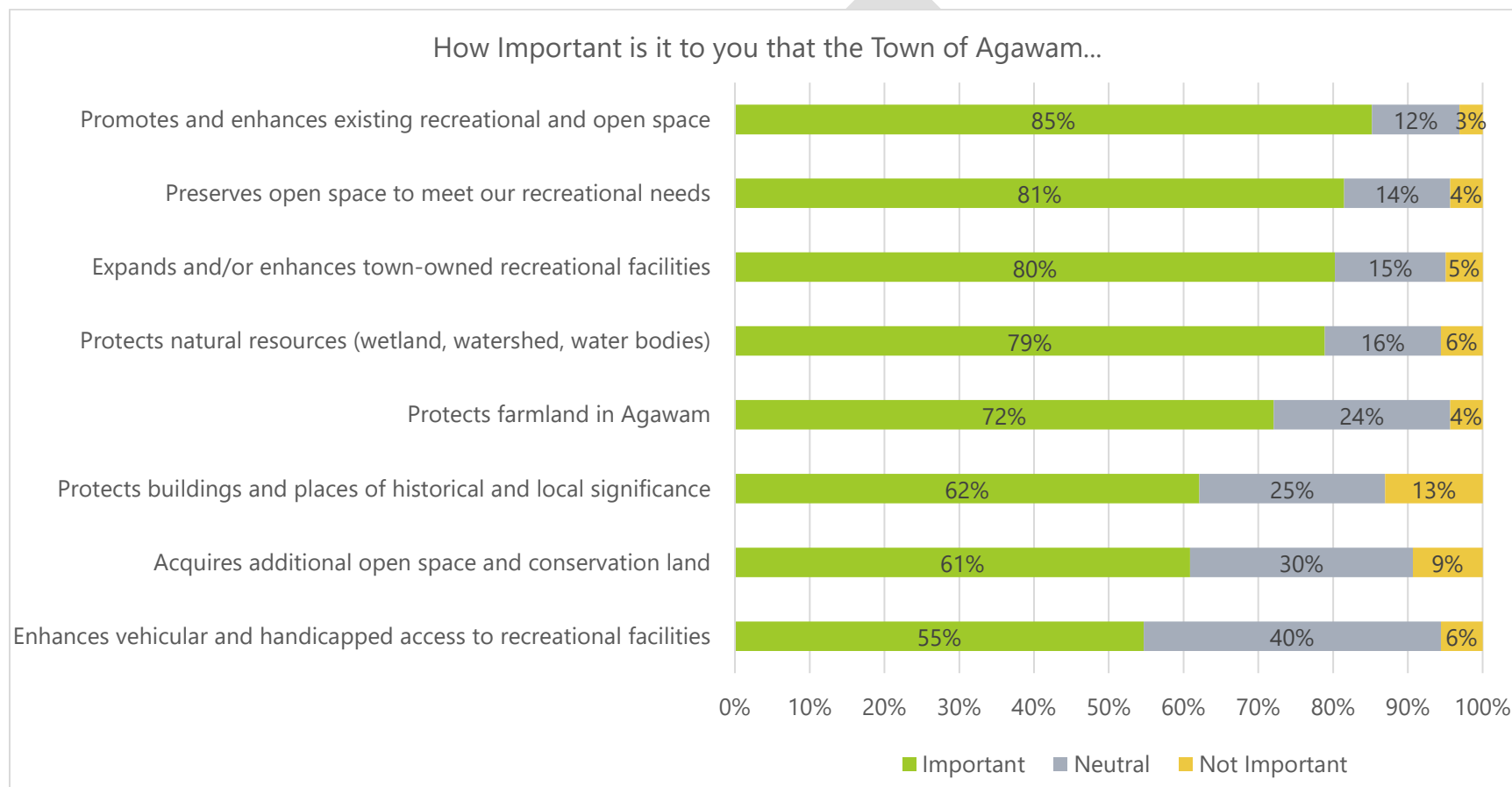
Many respondents live in households with young children and teenagers.

Counting yourself, how many members of your household fall into the following age categories?

Age Range	Number of People				
	1	2	3	4	5+
Ages 0-9 years old	24	30	5	1	1
Ages 10-19 years old	34	30	7	0	0
Ages 20-29 years old	17	15	1	0	0
Ages 30-39 years old	24	30	0	1	0
Ages 40-49 years old	34	31	0	0	0
Ages 50-59 years old	24	27	0	0	0
Age 60 years or older	19	26	0	1	0

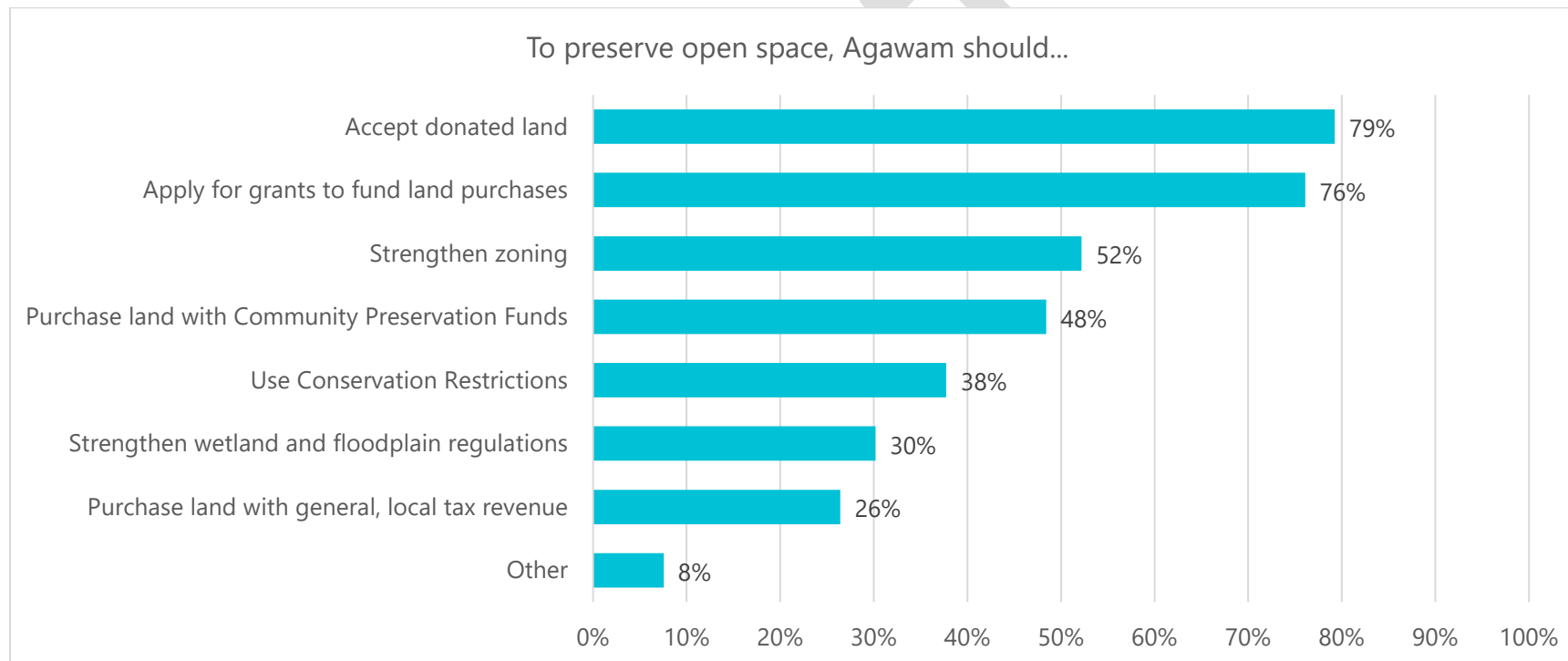
Question 3

Respondents are generally in agreement with strategies to expand and improve all types of open space, and that increasing accessibility is important. More respondents on 2019 survey agreed that adding open space and conservation land, enhancing accessibility, and protecting historic places are important, when compared to the same question on the 2014 survey.



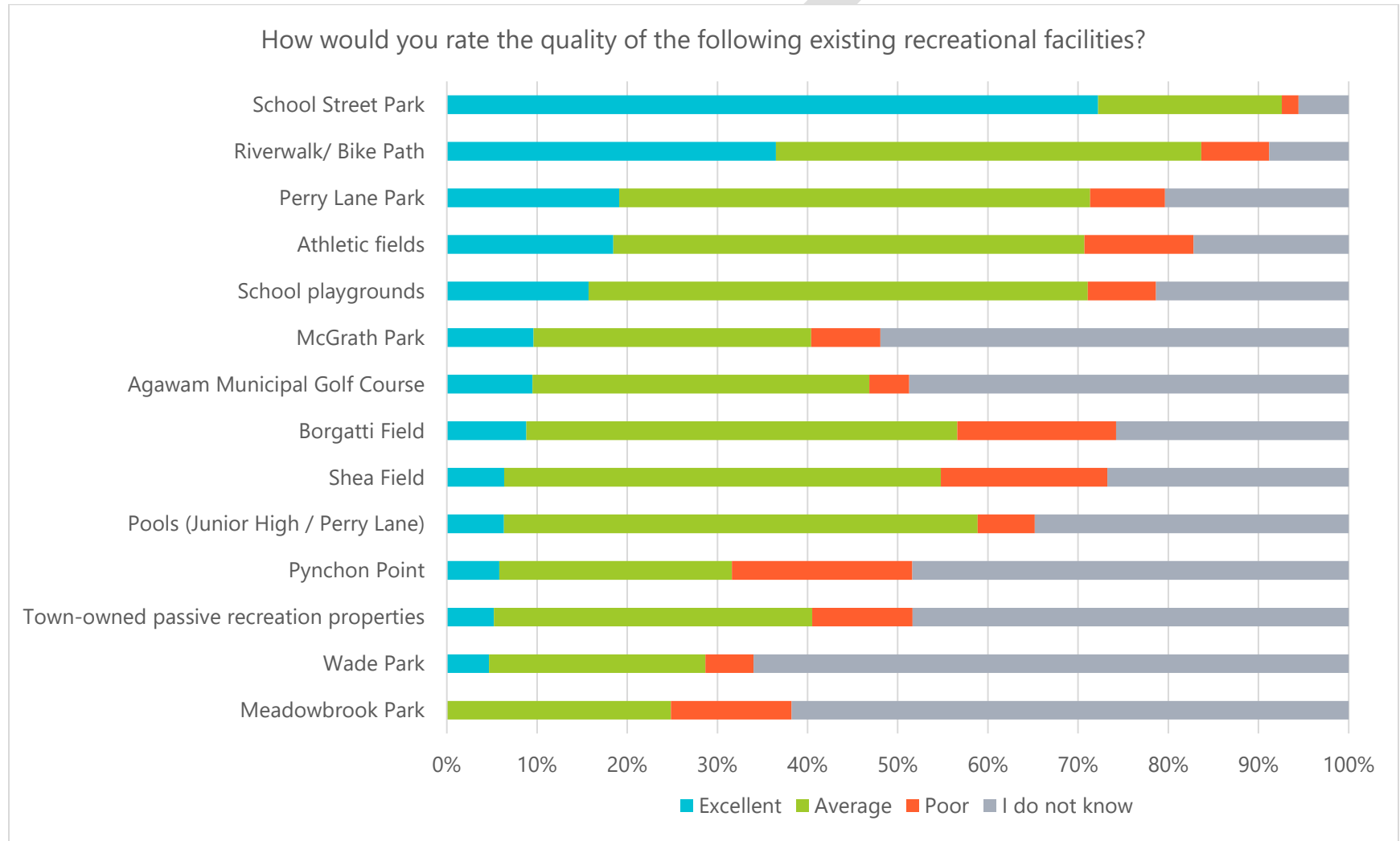
Question 4

Many respondents agree that the Town of Agawam should accept donated land and use grants to acquire open space land. Few respondents agreed that the town should use local tax revenue to purchase land or strengthen wetland and floodplain regulations. Other responses included creating a Land Trust, strengthening historic district regulations, and developing currently designated open space. Compared to the same question in 2014, respondents in 2019 felt more positively about strengthening zoning and using local tax revenue to purchase land. However, these ideas are still relatively unpopular.



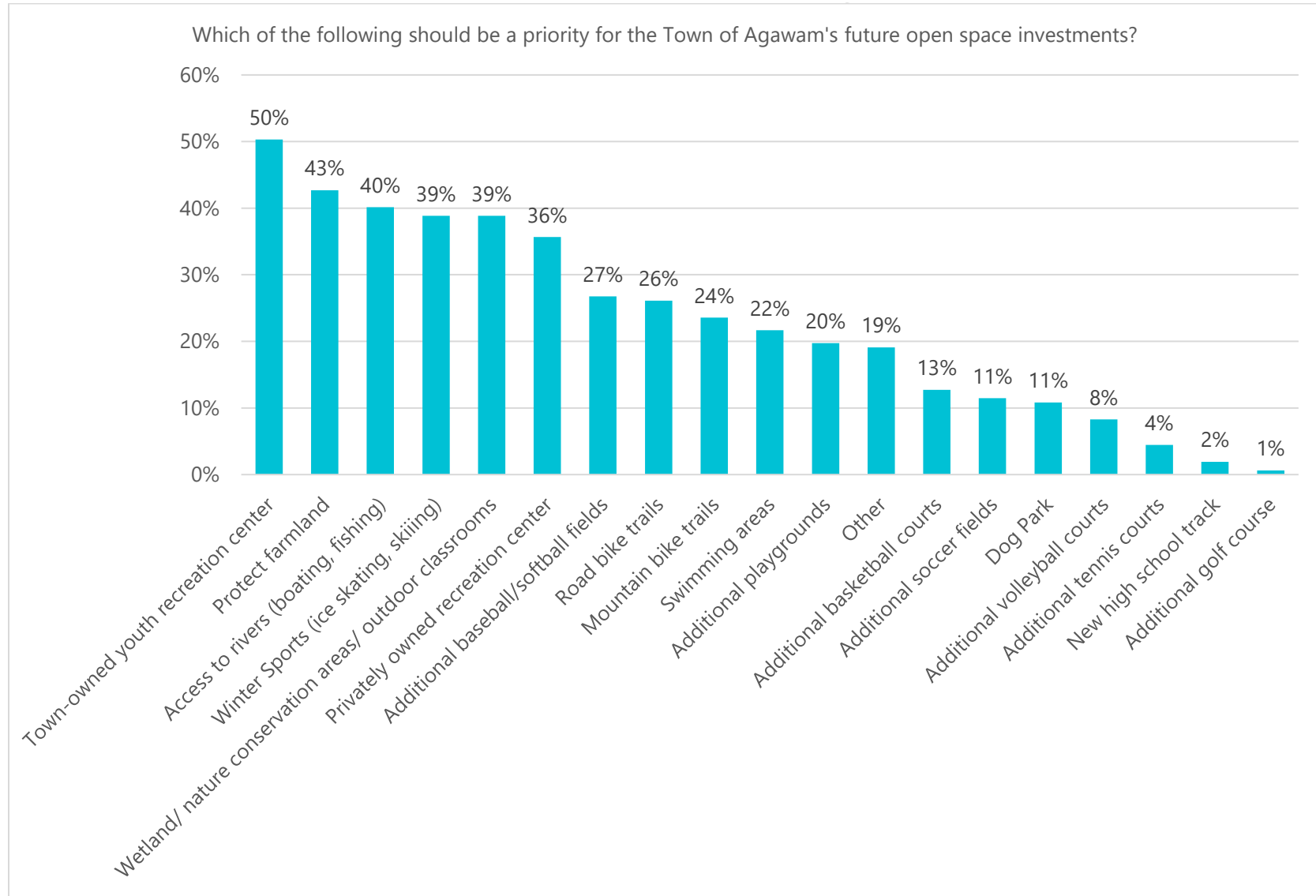
Question 5

Many respondents agree that School Street Park is of excellent quality. Most respondents that have visited a facility, think that facility is of average quality. Wade Park, Meadowbrook Park, and McGrath Park were the least known.



Question 6

A town-owned youth recreation center was the most popular idea. However, no idea had a clear majority of support.



Question 7

Youth recreation opportunities are the highest-rated recreation opportunity in town. It is rated higher in 2019 than it was in 2014. Opportunities to relax outdoors had the most positive responses. There is the largest opportunity to improve access to the Connecticut and Westfield Rivers and to improve adult recreation.

